

ACQUAPIU'

Wall hung, fan flue, room sealed gas boiler

SERVICE MANUAL

Models:

120MFS

G.C. No. 47 970 02

124MFS

G.C. No. 47 970 03

120RFS

G.C. No. 41 970 01

British Gas service listed

Leave this manual adjacent to the gas meter

Biasi U.K. Ltd
Unit 32/33, Planetary Road
Industrial Estate, Neachells Lane
Willenhall, Wolverhampton WV 13 3XB
Tel: 01902 304 400



Savio

Table of contents

1 Overall information	1	11 Gas valve	29
1.1 Overall View	1	11.1 Function	29
1.2 Hydraulic diagram	1	11.2 Nomenclature of the parts	29
2 General access & emptying hydr. circuits	2	11.3 SIT 827 Valve – adjustment	29
2.1 Nomenclature	2	11.4 SIT 827 Valve – modulating operator	29
2.2 Body panels	2	11.5 SIT 827 Valve – check	30
2.3 Control panel	2	11.6 SIT 827 Valve – removal	30
2.4 Access to the electronic circuits	3	11.7 SIT 837–Valve – adjustment	30
2.5 Access to the sealed chamber	3	11.8 SIT 837 Valve– modulating operator	30
2.6 Emptying the main circuit	4	11.9 SIT 837 Valve–check	30
2.7 Emptying the d.h.w. circuit	4	11.10 SIT 837 Valve – removal	30
3 Diagrams	5	12 Main circuit flow switch	32
3.1 Wiring diagram	5	12.1 Function	32
3.2 Functional flow diagrams	6	12.2 Checks	32
3.3 Control circuit voltages	8	12.3 Removal	32
4 Fault finding	9	13 D.h.w. flow switch and filter	34
5 Main heat exchanger	12	13.1 Function	34
5.1 Characteristics	12	13.2 Check	34
5.2 Removal	12	13.3 Removal of the sensor	34
5.3 Cleaning	12	13.4 Removal of the float	34
6 D.h.w. heat exchanger	13	13.5 Removal of the filter	35
6.1 Function	13	13.6 Flow limiter	35
6.2 Removal	13	14 Temperature probes	36
6.3 Mounting the exchanger	14	14.1 Function	36
6.4 Hydraulic circuit run	15	14.2 Checks	36
7 Pump	16	14.3 Removal of the main circuit temp. probe	36
7.1 Function	16	14.4 Removal of the d.h.w. temp. probe	36
7.2 Checks	16	15 By-pass valve	38
7.3 Removal	17	15.1 Function	38
8 3-way valve	18	15.2 Adjustment	38
8.1 Function	18	15.3 Removal	38
8.2 Checks	18	16 Flue fan, venturi, air pressure switch	39
8.3 Removal	19	16.1 Function	39
9 Electronic control circuit	20	16.2 Checks	39
9.1 Function	20	16.3 Removal of the fan and venturi device	40
9.2 Selection and adjustment devices	20	16.4 Removal of the air pressure switch	40
9.3 Checking the temperature	20	17 Ignition and detection electrodes	41
9.4 Function selectors	21	17.1 Function	41
9.5 Pump function mode	22	17.2 Checks	41
9.6 Ignition gas pressure regulator	22	17.3 Removal	41
9.7 Max. c/h power regulator	22	18 Safety thermostat	42
9.8 Checks	22	18.1 Function	42
9.9 Removing operations	22	18.2 Checks	42
9.10 Mounting operation	23	18.3 Removal	43
9.11 Heat control in "c/h+d.h.w." function	24	19 Electrical resistances	44
9.12 Heat control in "d.h.w. only" function	25	19.1 Circulator	44
10 Full sequence ignition device	26	19.2 3-way valve	44
10.1 Function	26	19.3 Gas valve	44
10.2 Checks	26	19.4 Temperature probes	45
10.3 Removal	26	19.5 Fan	45
10.4 Ignition and control sequence	28	20 Short spare parts list	46

1 Overall information

1.1 Overall View

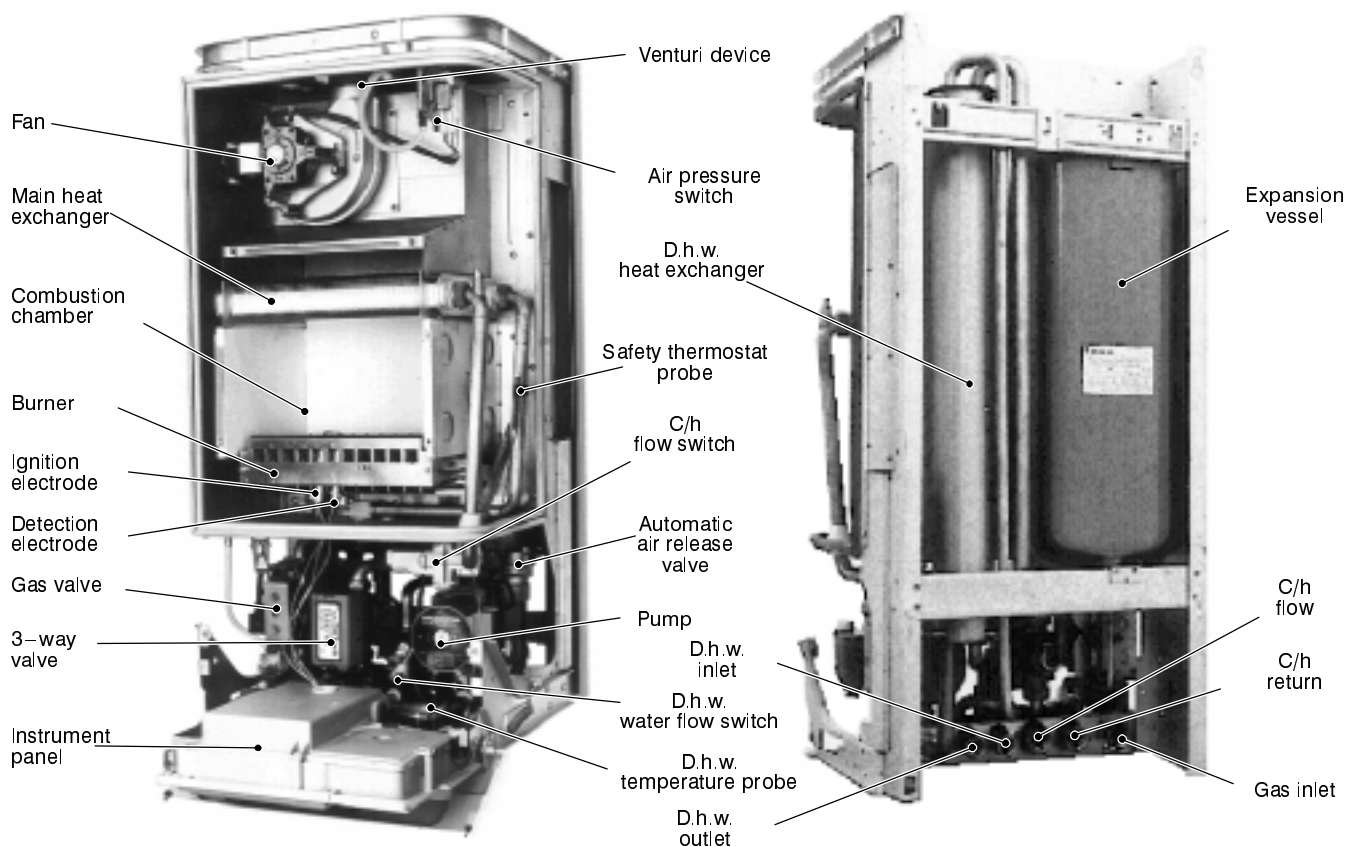


fig. 1

1.2 Hydraulic diagram

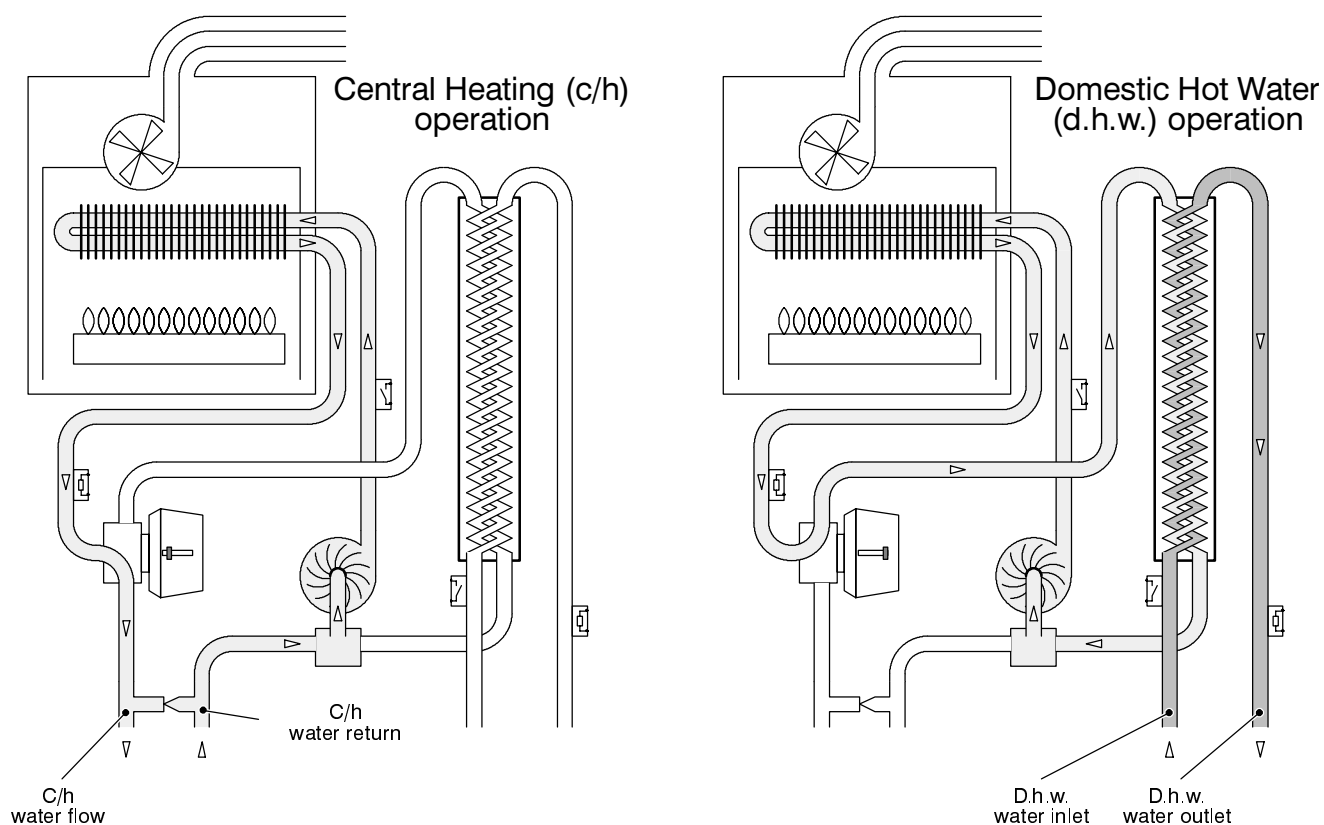


fig. 2

2 General access and emptying hydraulic circuits

2.1 Nomenclature

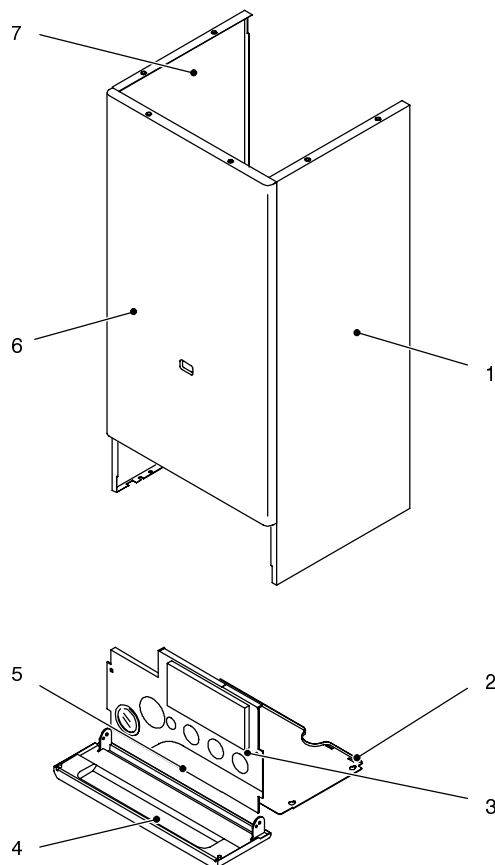


fig. 3

- 1 Right side panel
- 2 Lower protection plate
- 3 Instrument panel
- 4 Control-panel cover
- 5 Service panel
- 6 Front panel
- 7 Left side panel

2.2 Body panels

⚡ **Warning: isolate the boiler from the mains electricity supply before removing any covering or component.**

For the most part of the check and maintenance operations it is necessary to remove one or more panels of the body.

The side panels can be removed only after the removal of the front panel.

To remove the front panel remove screws *A* (fig. 4), bring the base of the panel far from the boiler and lift it, freeing it from the top hooks.

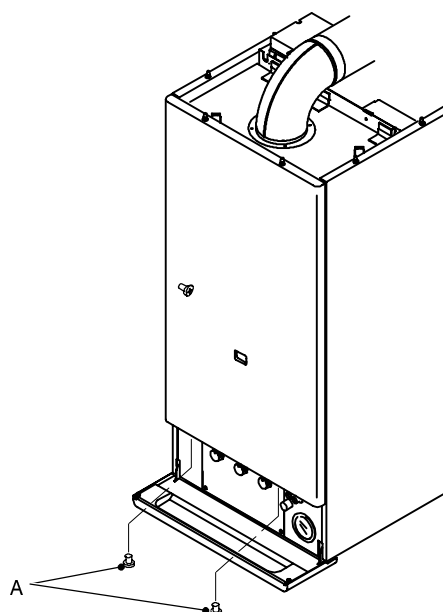


fig. 4

To remove the side panels loosen screws *B* (fig. 5) bring the base of the panels far from the boiler and lift them, freeing them from the top hooks.

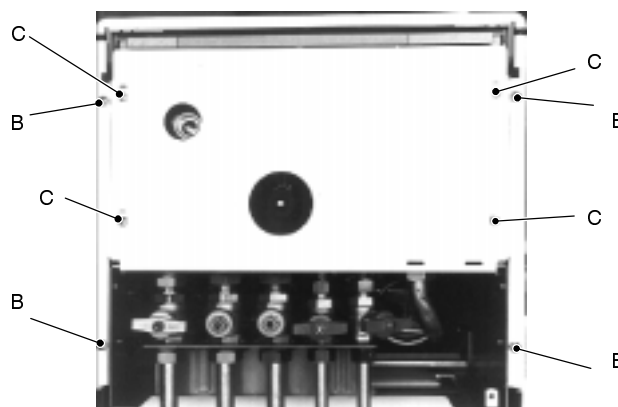


fig. 5

To remove the lower protection loosen the four screws *C* (fig. 5) and move the protection towards the rear part of the boiler.

2.3 Control panel

To gain access to the parts located behind the instrument panel proceed as follows:

- 1 Remove the front panel of the body
- 2 Remove the two screws *D* (fig. 6) and lower the instrument panel.

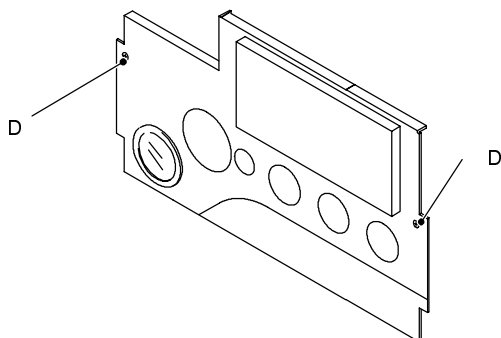


fig. 6

2.4 Access to the electronic circuits

Warning: isolate the boiler from the mains electricity supply before removing any covering or component.

To remove the service panel "5":

- 1 Place a small screwdriver with a blade in the two slots indicated in fig. 7;
- 2 Delicately lever with a screwdriver upwards in order to unhook the panel, rotating it downwards.

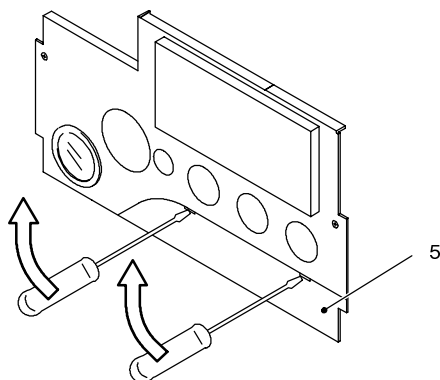


fig. 7

To gain access to the electronic regulation and ignition PCB

- 1 Lower the control panel as illustrated in section 2.3 of this chapter.
- 2 Remove the rear lid of the control panel clearing it from the hooks at the rear positioned as shown by the arrows printed on the lid (fig. 8);

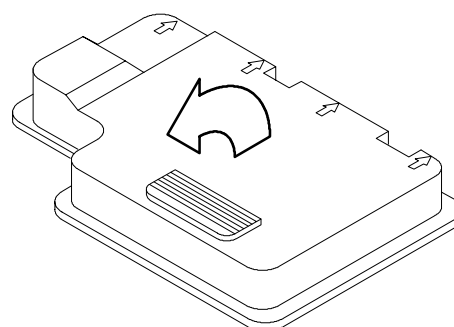


fig. 8

2.5 Access to the sealed chamber

To gain access to the parts contained in the sealed chamber it is necessary to remove the cover of the sealed chamber.

For this purpose, remove the front panel and the right side panel of the body, completely unscrew the Allen Keys (4 mm) *E* (fig. 9), located in the areas indicated in fig. 10.

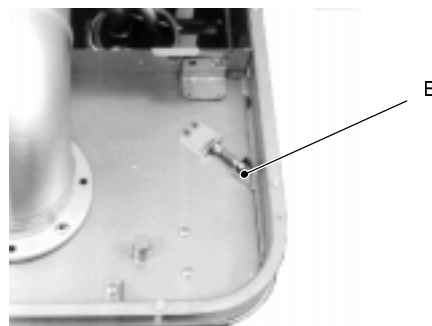


fig. 9

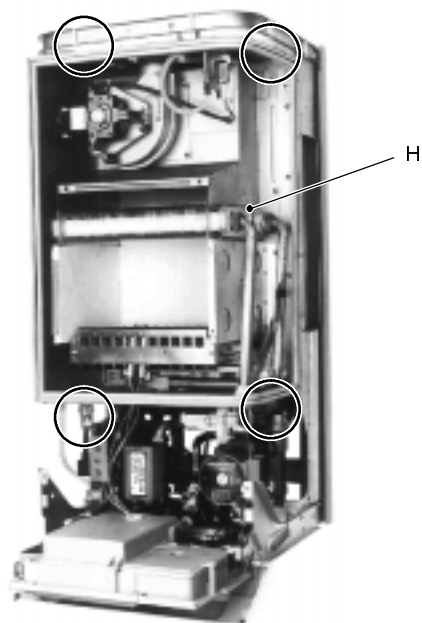


fig. 10

2.6 Emptying the main circuit

- 1 Remove the lower protection of the boiler
- 2 Close the c/h circuit isolation valves *F* (fig. 11);
- 3 Loosen the plugs *G* until the boiler is completely emptied.

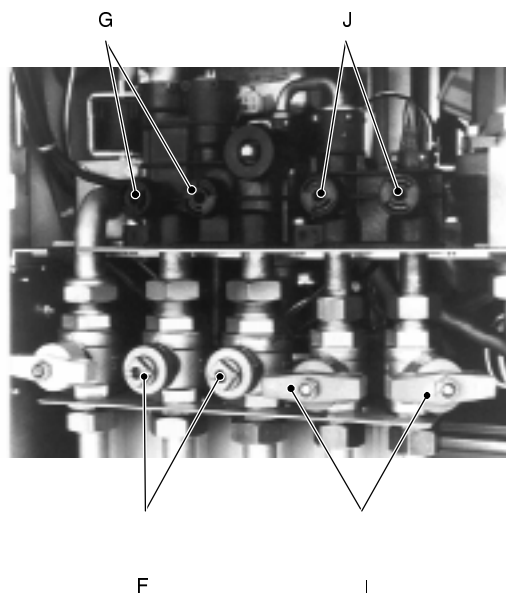


fig. 11

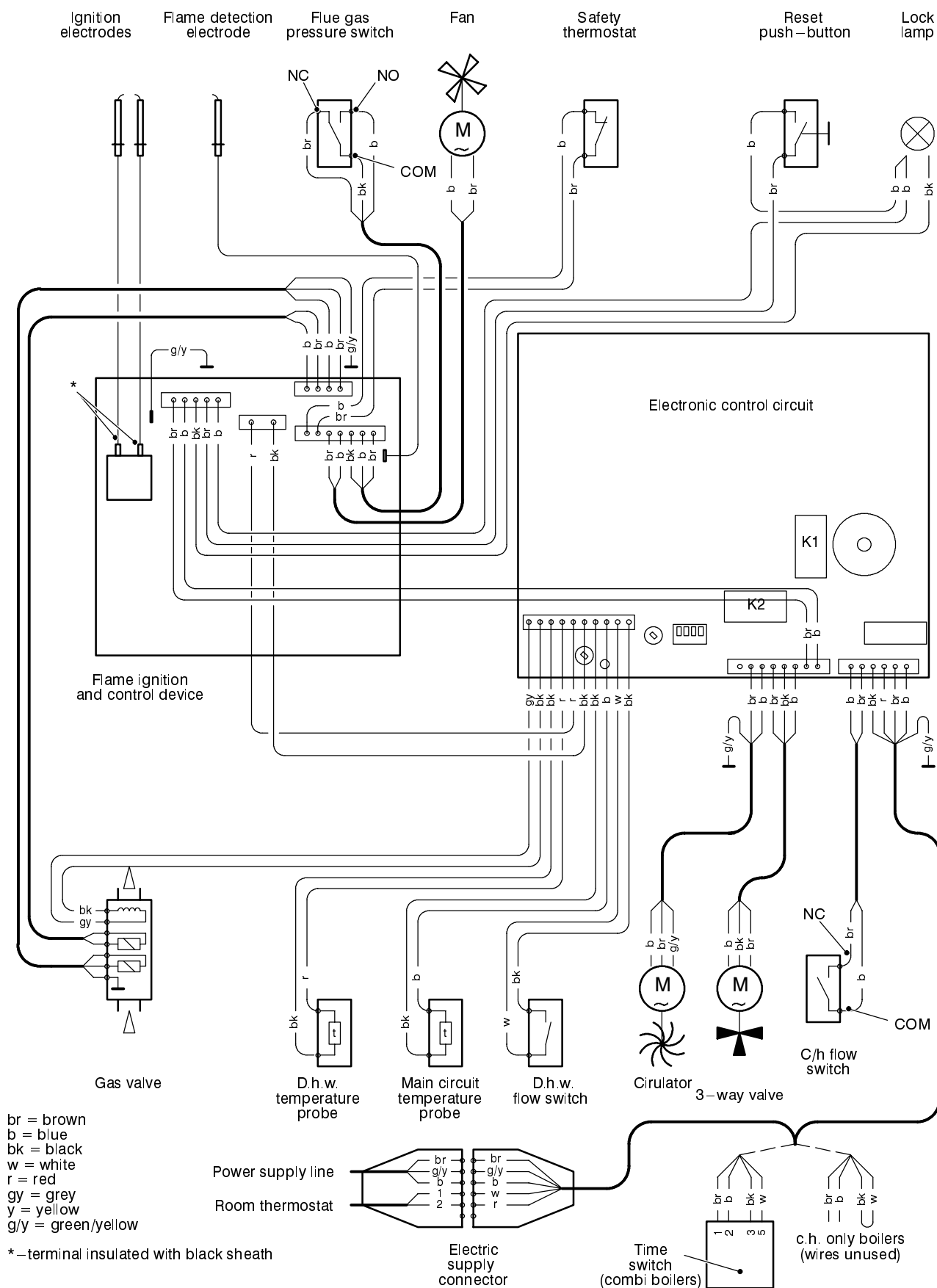
To facilitate the downflow of water, remove the front panel, also remove the sealed chamber lid) and loosen the manual bleed valve. *H* (fig. 10) placed near the inlet pipe fitting of the main heat exchanger. Close it again once the emptying has been completed.

2.7 Emptying the d.h.w. circuit

- 1 Remove the lower protection of the boiler;
- 2 Close the d.h.w. circuit cut-off valves *I* (fig. 11);
- 3 Loosen plugs *J* until the boiler has been completely emptied.

3 Diagrams

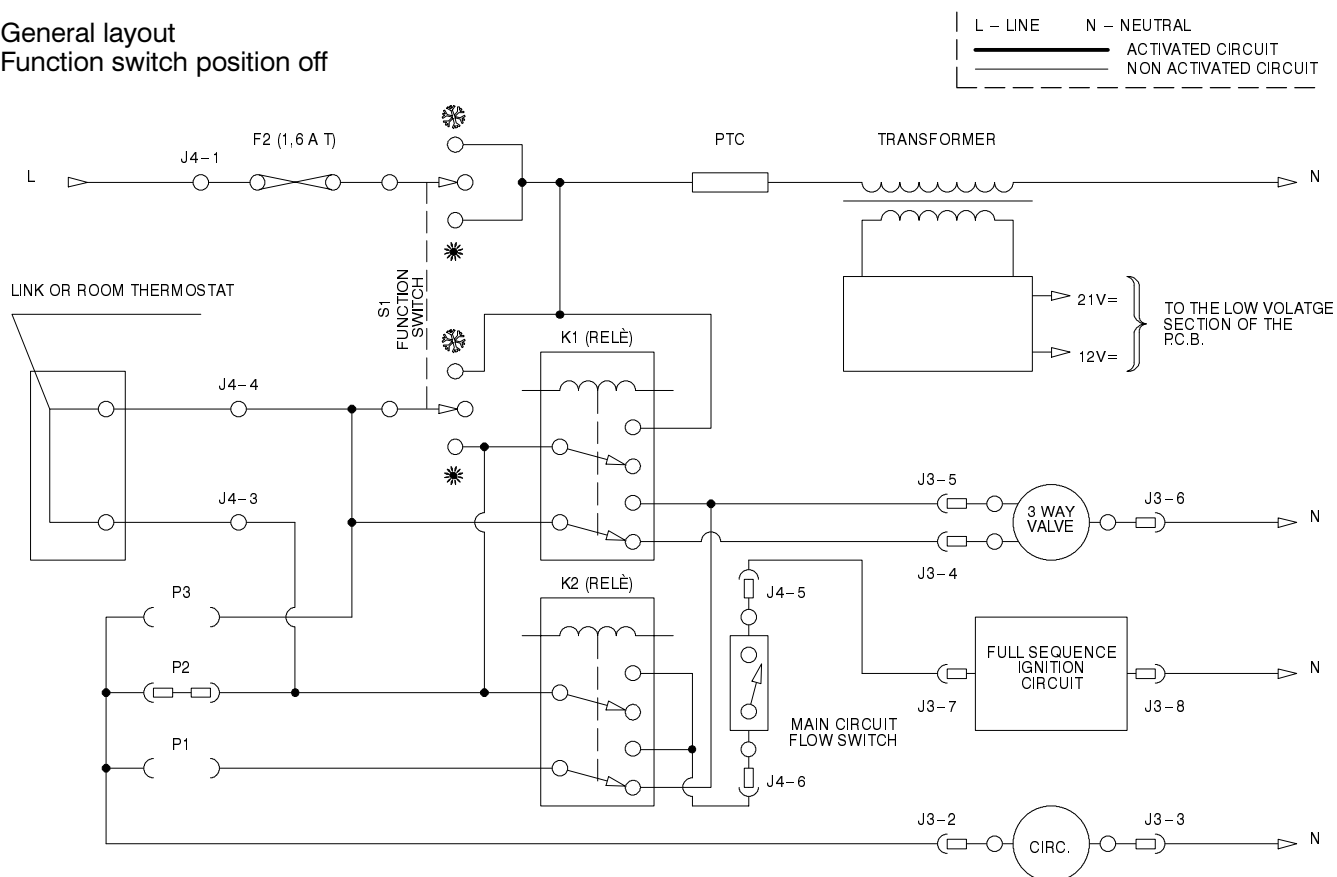
3.1 Wiring diagram



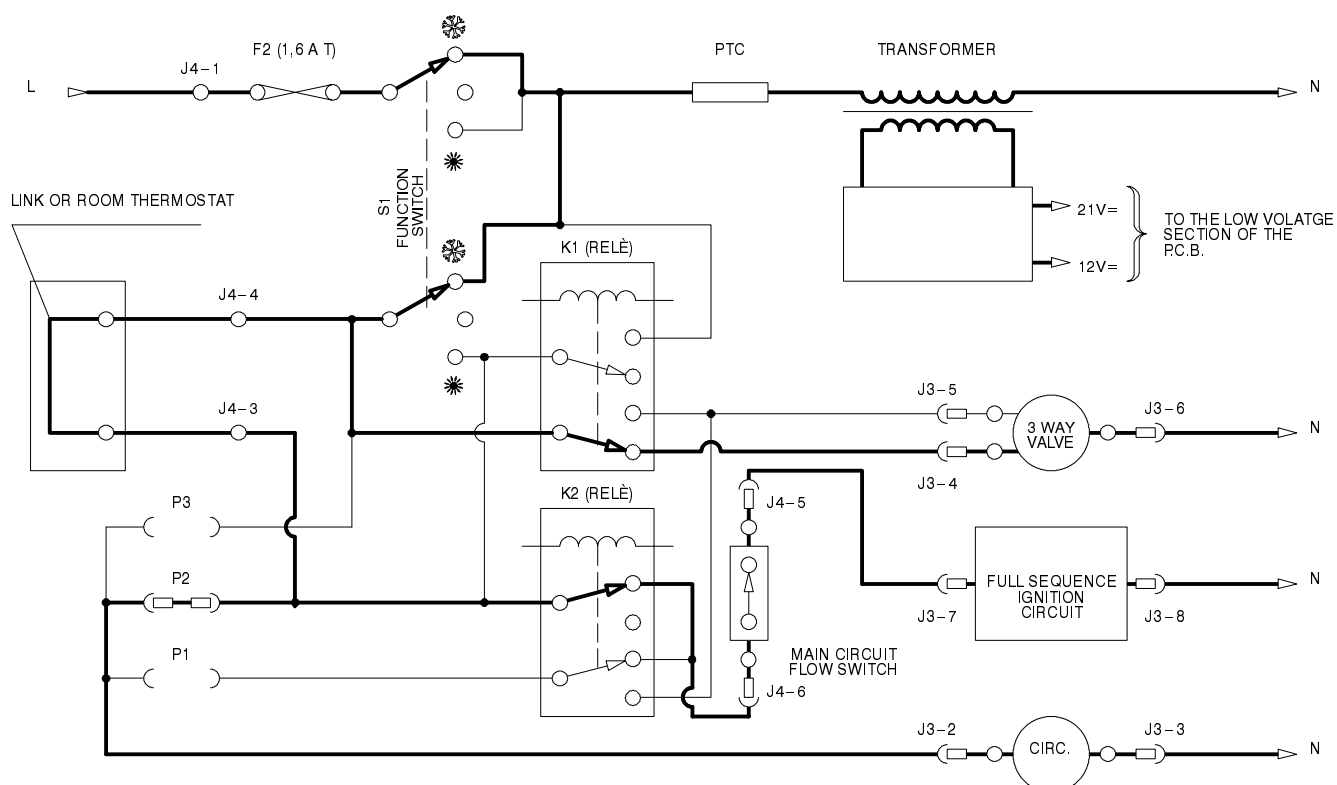
3.2 Functional flow diagrams


General layout



Function switch position off

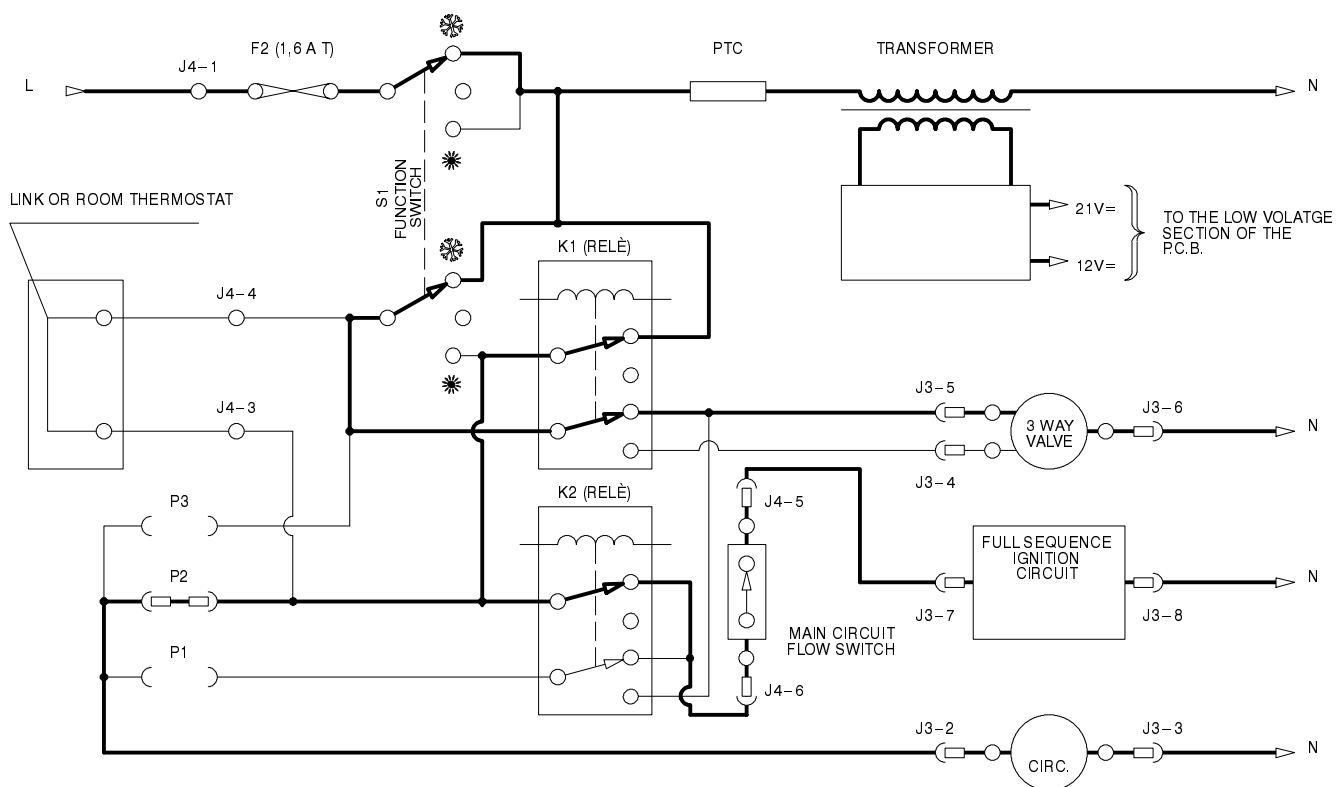



Function switch position Heat request on c/h

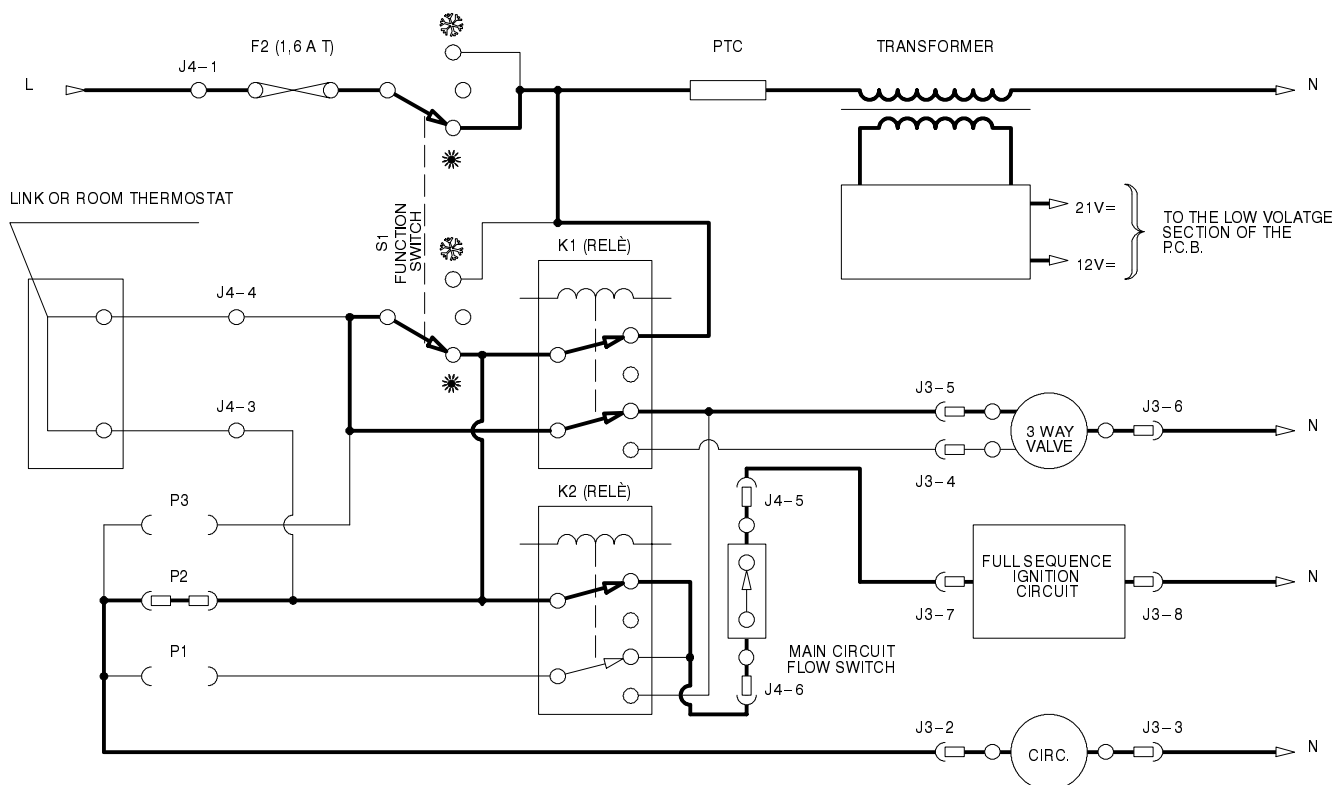


Function switch position 
Heat request on D.h.w.

L - LINE N - NEUTRAL
 ACTIVATED CIRCUIT
 NON ACTIVATED CIRCUIT



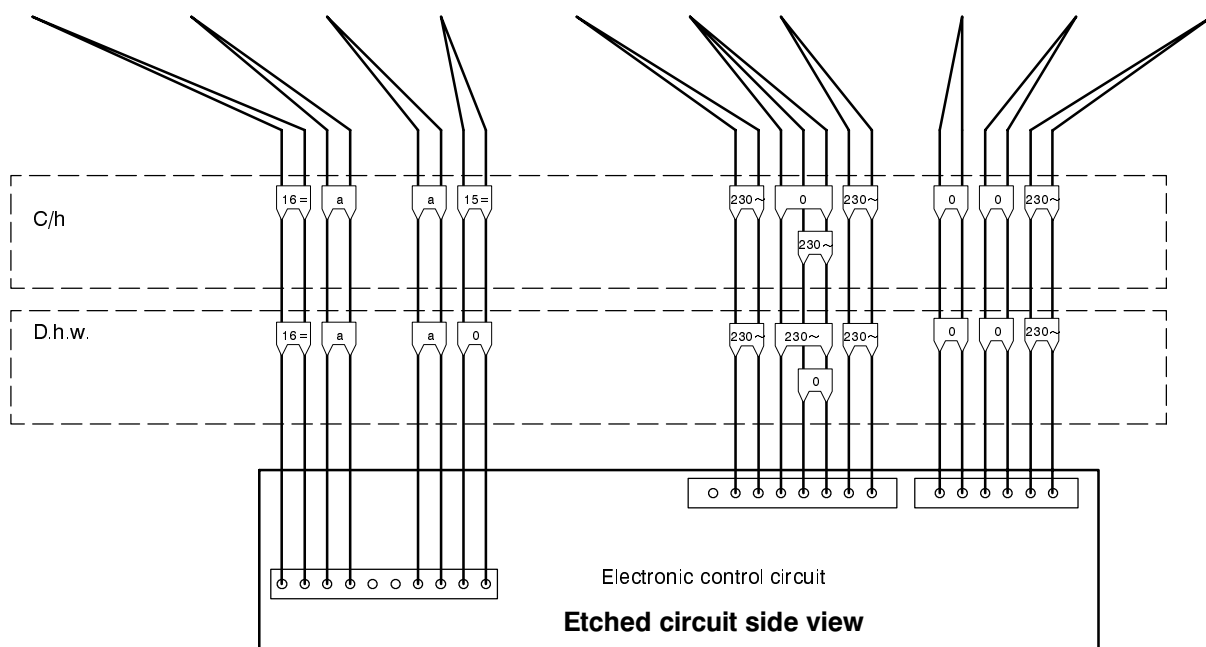
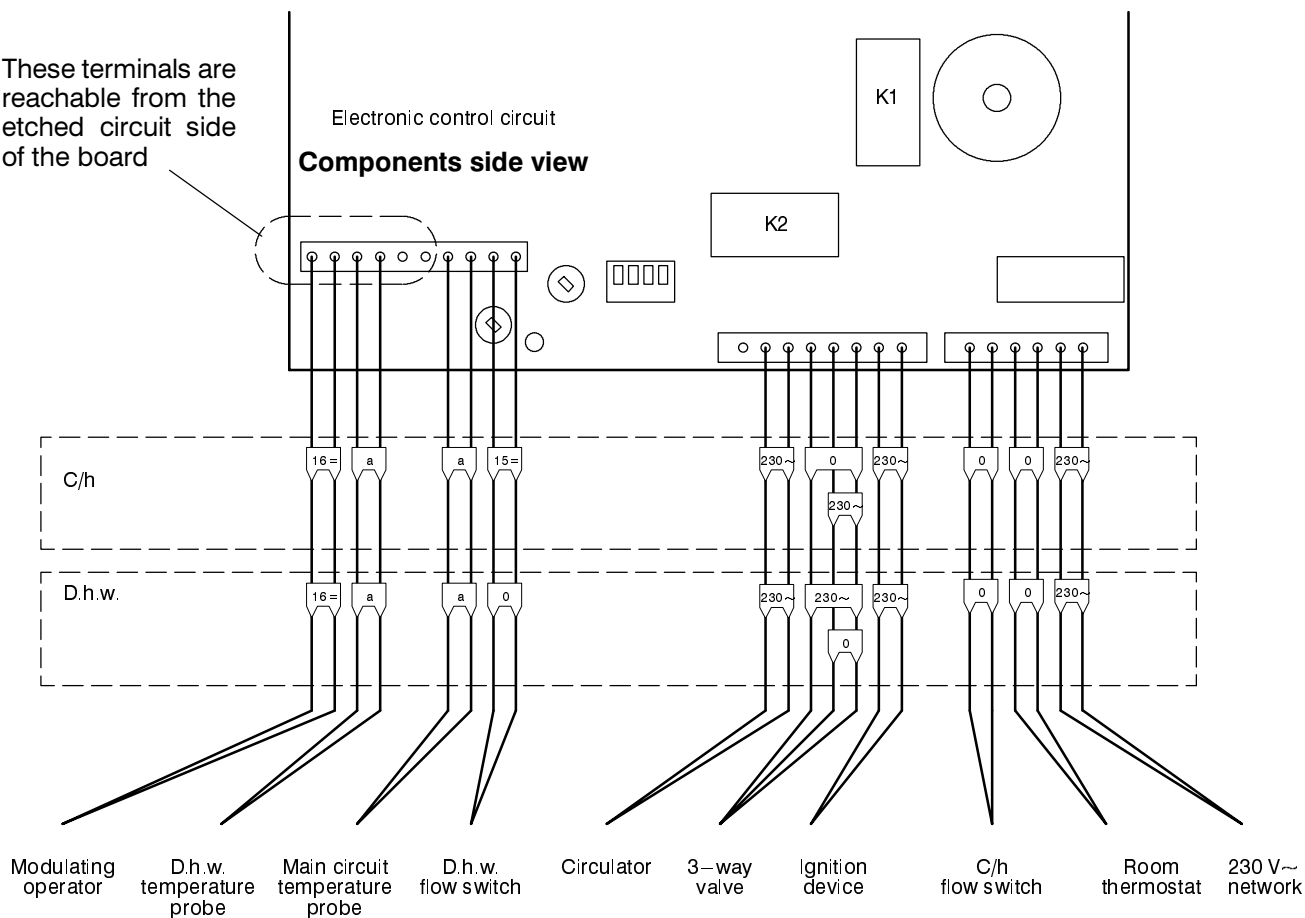
Function switch position 
Heat request on D.h.w.



3.3 Control circuit voltages

These terminals are reachable from the etched circuit side of the board

Electronic control circuit
Components side view



a: never zero (short circuit) never 12V= (open circuit)

Electrical voltages in Volts during normal operation with burner on at maximum power

4 Fault finding

		Components to check																														
Section of the manual → (note ref. in brackets)		(1)	(2)	(3)	(4)	7.2		8.2		9.8			10.2	11.5		12.2	13.2	14.2		15.2	16.2			17.2	18.2	(6)	(7)	(8)	(9)			
Defect ↓		Power supply line	Gas supply line	Flue pipes	C. h. circuit	D. h. w. circuit	Pump (windings)	Pump (rotor – impeller)	3 way valve (windings)	3 way valve (diverter mechanism)	Fuse (regulation p.c.b.)	Regulation p.c.b.	Function selectors (reg. p.c.b.)	Full sequence device	Gas valve (on–off operators)	Gas valve (modulating operator)	Main circuit flow switch	D. h. w. flow switch	Main circuit temp. probe	D. h. w. temp. probe	By–pass valve	Fan	Venturi device	Air pressure switch	Ignition electrode	Detection electrode	Safety thermostat	Injectors	Expansion vessel	Safety valve	Pressure gauge	
The boiler does not start either in c/h or d.h.w. mode. Fan still. Instrument panel light (green) off . Lockout lamp (red) off .		■									■	■					■				■	■										
The boiler does not start either in c/h or d.h.w.. mode. Fan still. Instrument panel light (green) on . Lockout lamp (red) off .					■	■	■	■									■						■									
Lockout lamp (red) on . By pressing the reset push – button the boiler turns on and operates correctly.			■													(5)										■						
Lockout lamp (red) on . By pressing the reset push – button the boiler starts the ignition cycle. The burner lights on , the ignition sparks continue and the boiler locks again.		■	■											■												■			■			
Lockout lamp (red) on . By pressing the reset push – button the boiler starts the ignition cycle. The burner doesn't light on , the ignition sparks continue and the boiler locks again.		■	■									■								■					■							
The boiler runs but the combustion is noisy and there is flame lift effect.				■																												
Incorrect modulation												■	■																			
The boiler switches on and off the burner to a fixed gas pressure												■	■																			

		Components to check																											
		(1)	(2)	(3)	(4)	7.2		8.2		9.8			10.2	11.5		12.2	13.2	14.2		15.2	16.2			17.2		18.2	(6)	(7)	(8)
Section of the manual → (note ref. in brackets)																													
Defect ↓																													
The boiler fires on c/h and d.h.w. for a few seconds, goes off and fires again constantly.		■		■	■	■	■																						
The fan turns but the boiler does not turn on.																													
The boiler turns off immediately, drawing d.h.w.																													
Regular functioning in c/h																													
Noisy boiler																													
With the function switch in summer or winter mode the boiler turns on even without drawing the d.h.w. and the main circuit temperature is kept at about 90°C.																													
The pump runs continuously.																													
The c/h system does not heat.																													
The boiler operates correctly in d.h.w. mode.																													
The boiler does not supply d.h.w. (cold water from the tap).																													
Regular operation in c/h mode even during a drawing off d.h.w.																													
On c/h mode the temperature of the main circuit reaches 90°C and the c/h system does not heat.																													
The boiler operates correctly on d.h.w. mode.																													
The boiler operates correctly but the gas pressure to the burner remains at minimum.																													
Poor d.h.w. temperature																													
Low flow rate of d.h.w.																													

		Components to check																													
		(1)	(2)	(3)	(4)	7.2		8.2		9.8			10.2	11.5		12.2	13.2	14.2		15.2	16.2			17.2		18.2	(6)	(7)	(8)	(9)	
Section of the manual → (note ref. in brackets)		Power supply line	Gas supply line	Flue pipes	C.h. circuit	D.h.w. circuit	Pump (windings)	Pump (rotor – impeller)	3 way valve (windings)	3 way valve (diverter mechanism)	Fuse (regulation p.c.b.)	Regulation p.c.b.	Function selectors (reg. p.c.b.)	Full sequence device	Gas valve (on – off operators)	Gas valve (modulating operator)	Main circuit flow switch	D.h.w. flow switch	Main circuit temp. probe	D.h.w. temp. probe	By – pass valve	Fan	Venturi device	Air pressure switch	Ignition electrode	Detection electrode	Safety thermostat	Injectors	Expansion vessel	Safety valve	Pressure gauge
Defect ↓					■																										
Water leaks from the safety valve during operation on c/h																															
Water leaks from the safety valve when the boiler is off.																															

Note

- 1 Check for 220–240V~ between line (L) and neutral (N)
Verify the integrity of supply cable, plug and external fuses.
Check the polarity of line and neutral connection
- 2 Verify the soundness of the gas supply pipe, the position of stop valves.
Check the gas pressure at the inlet test point of the gas valve (see sect. 11.3) with the boiler at rest and during operation and compare it with the values given on the installation booklet.
- 3 Check for soundness and absence of obstructions. Verify that the flue terminal is correctly installed (see clearances) and ensure that exhaust gas is not sucked back by the boiler.
- 4 Check for soundness of the circuit and verify its correct filling (see also installation manual).
- 5 Check the **minimum** gas pressure at the outlet test point of the gas valve (see sect. 11.3) and compare it with the value given on the installation booklet.
- 6 Verify the cleanness of injectors.
- 7 Check the pressurization of the expansion vessel. Refer to the installation manual for proper values.
- 8 d.h.w. pressure too high or flow rate too high. If necessary insert a flow rate limiter (13.2).

5 Main heat exchanger

5.1 Characteristics

The main heat exchanger (A in fig. 12) has the function of transferring heat of the gas produced by combustion to the water circulating in it.

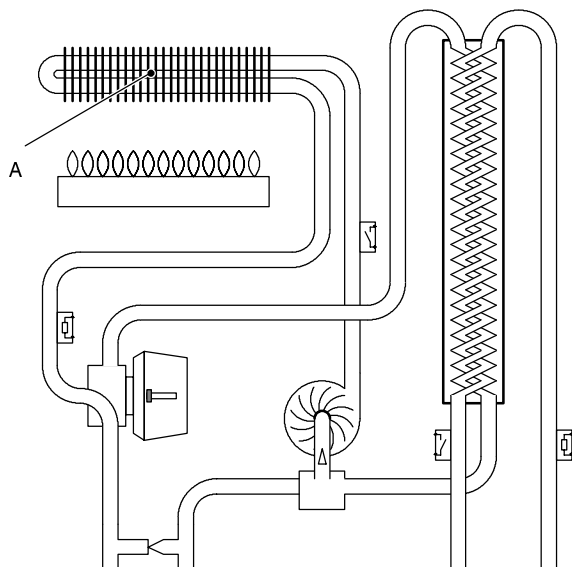


fig. 12

The hydraulic circuit is composed of 8 elliptical pipes connected in parallel (fig. 13).

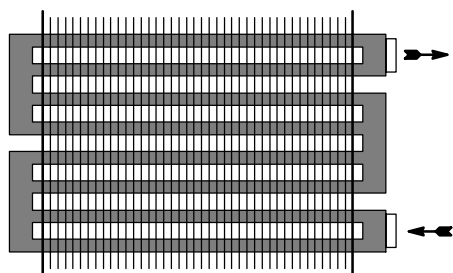


fig. 13

5.2 Removal

Warning: isolate the boiler from the mains electricity supply before removing any covering or component.

- 1 Empty the main circuit of the boiler
- 2 Remove the front panel of the body

- 3 Remove the right side panel of the body and the sealed chamber cover.
- 4 Remove the cover of the combustion chamber
- 5 Separate the heat exchanger from the hydraulic circuit, loosening the inlet and outlet pipe fittings B (fig. 14);

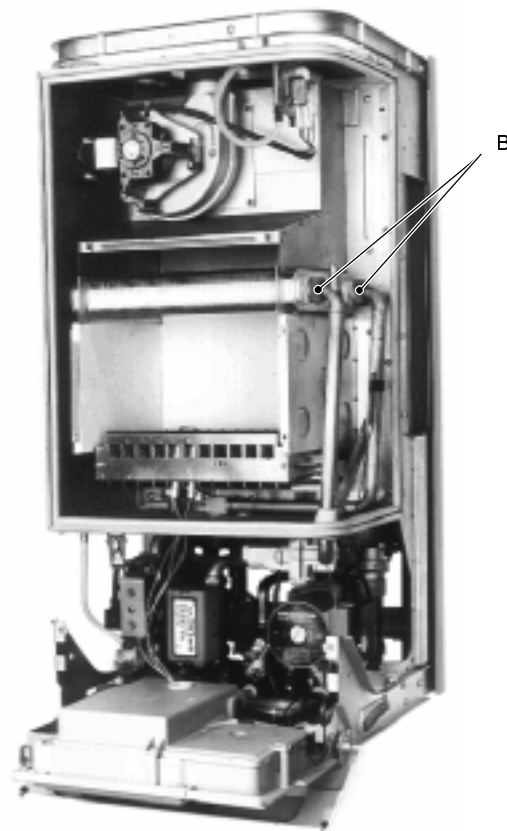


fig. 14

- 6 Extract the heat exchanger, from the front
- 7 Assemble the heat exchanger carrying out the removal operations in reverse sequence.

5.3 Cleaning

If there are deposits of soot or dirt between the blades of the heat exchanger, clean with a brush or non-metallic bristle brush.

In any case, avoid any actions that can damage the protective varnish with which the exchanger has been covered.

6 D.h.w. heat exchanger

6.1 Function

The d.h.w. heat exchanger (A in fig. 15) allows the instantaneous transferral of heat from the primary hydraulic circuit to the water destined for d.h.w. use.

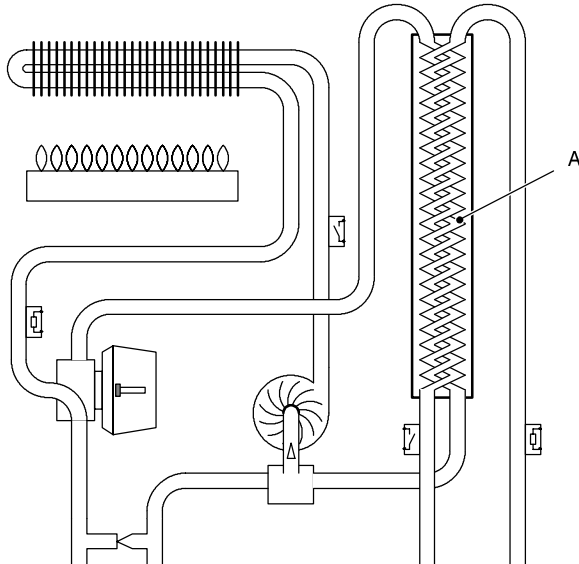


fig. 15

The water structure and flow paths are shown in fig. 20. The primary circuit runs along the heat exchanger from the top towards the bottom and inside the heat exchanger there are two parallel flows. Between these two flows the d.h.w. circuit water circulates against the current.

The shape of the components of the heat exchanger causes the water to flow in a helical manner.

6.2 Removal

The d.h.w. heat exchanger can be removed from the boiler in three different manners on the basis of the free adjacent space available.

From the top: at least 40 cm;
from the right side: at least 13 cm;
from the bottom: at least 60 cm;

⚡ **Warning: isolate the boiler from the mains electricity supply before removing any covering or component.**

- 1 Empty the primary circuit and the d.h.w. circuit of the boiler
- 2 Remove the front panel of the body and lower the instrument panel
- 3 Remove the motor of the 3-way valve (see 3-way valve)

- 4 Completely unscrew the top pipe fitting B of the 3-way valve and remove the forks C and D (fig. 16);

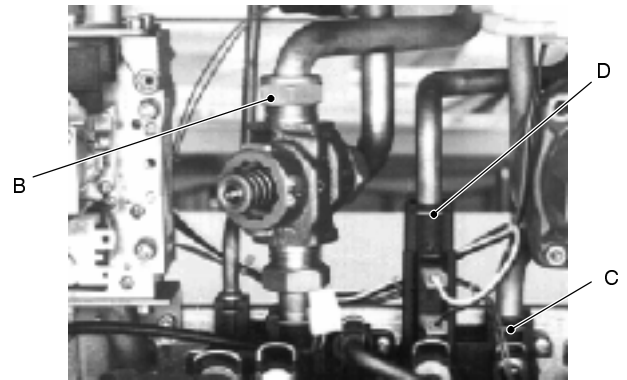


fig. 16

- 5 Remove the forks that hold the pipes E and F (fig. 17) to the top plug of the d.h.w. heat exchanger and disconnect the pipes (it is not necessary to remove them from the boiler).

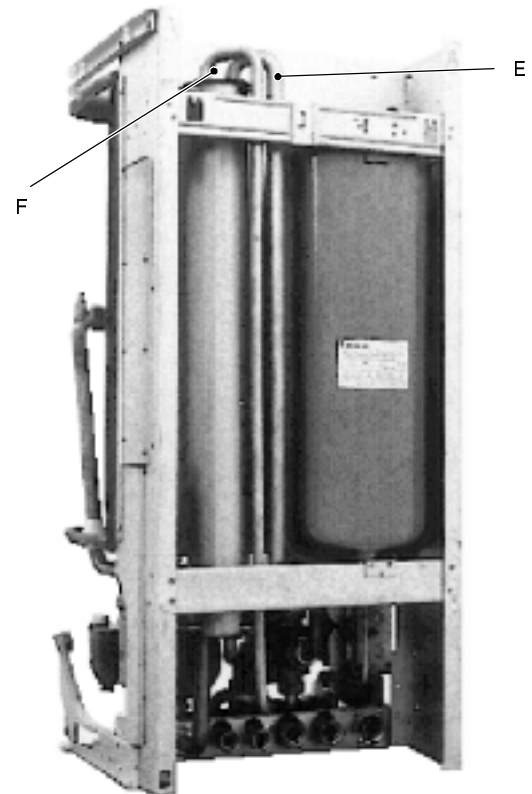


fig. 17

- 6 Remove the bracket that holds the heat exchanger to the frame (top plug side) by unscrewing the screw that fastens it to the frame
- 7 loosen the lower pipe fitting G (fig. 18);

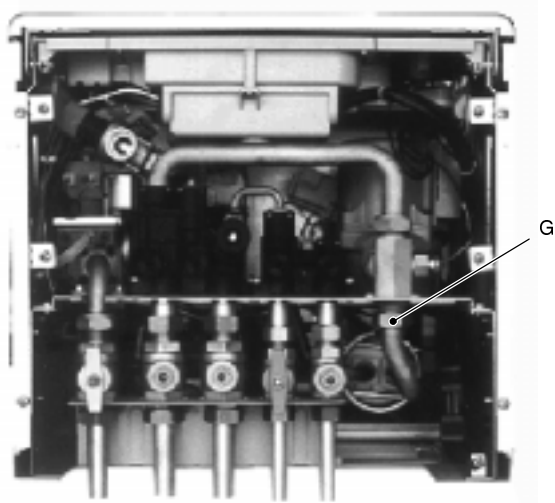


fig. 18

- 8 Remove the d.h.w heat exchanger together with the two lower pipes, extracting it:
 - from the top (400 mm clearance minimum)
 - from the side window beginning from the lower extremity (130 mm clearance minimum)
 - from the bottom (600 mm clearance minimum)
- 9 Reassemble the d.h.w heat exchanger carrying out the removal operations in the reverse order.

6.3 Mounting the exchanger



Warning: to lubricate the O-ring gaskets exclusively use a silicone base grease

compatible to be in contact with foods and approved by the local water Authorities.

- 1 Insert the d.h.w heat exchanger together with the two lower pipes.
- 2 Fit the pipe connection G (fig. 18).
- 3 Install the bracket that holds the heat exchanger to the frame (top plug side).
- 4 Fit the pipes E and F (fig. 17) to the top plug of the d.h.w heat exchanger, to the d.h.w flow switch (fig. 19) and to the outlet connection of the boiler.
- 5 fix them with the forks.
- 6 Screw up the top pipe fitting H (fig. 19) of the 3-way valve.

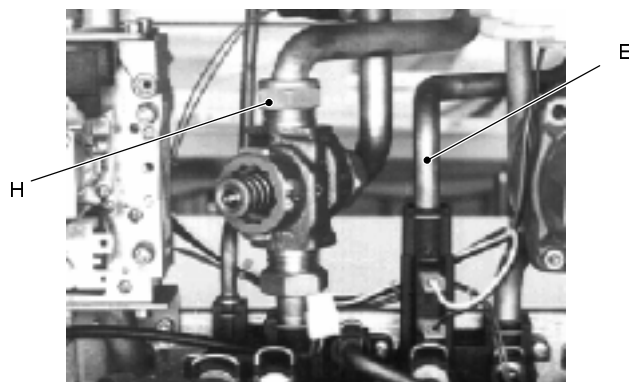


fig. 19

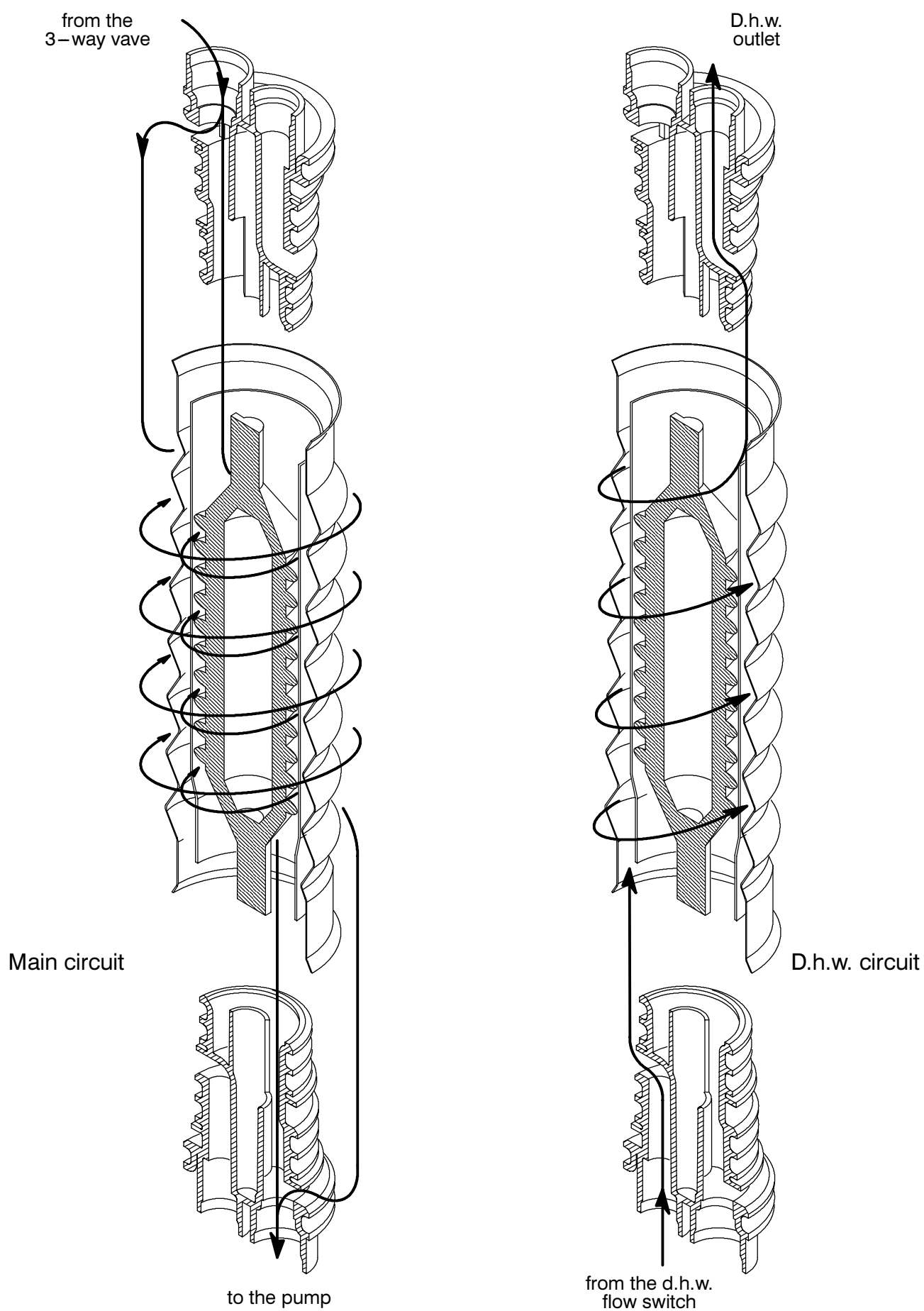
6.4 Hydraulic circuit run

fig. 20

7 Pump

7.1 Function

The pump (A in fig. 21) has the function of making the water in the main circuit circulate through the main heat exchanger and therefore through the c/h system (during the c/h function) or through the secondary heat exchanger (during the d.h.w. function).

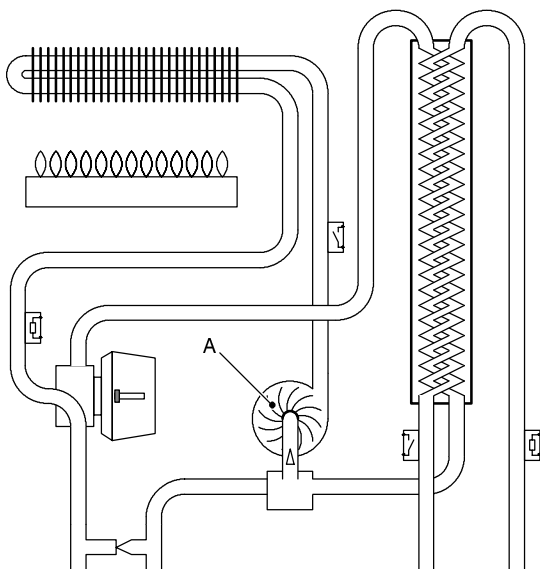


fig. 21

Two different types of pumps can be used (fig. 22a – fig. 22b).



fig. 22a

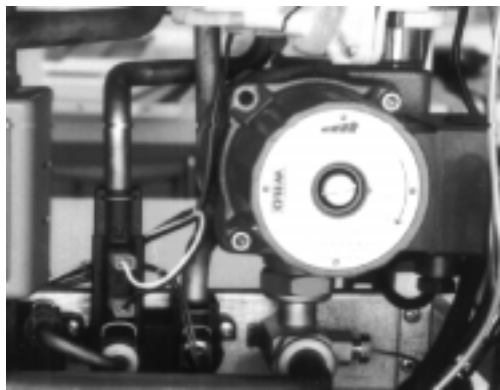


fig. 22b

7.2 Checks

Warning: isolate the boiler from the mains electricity supply before removing any covering or component.

✓ Check that the pump is not seized and that the movement of the rotor is not subject to mechanical impediments.

With the boiler off, remove the front panel and lower the instrument panel. Remove the air release plug of the pump and turn the rotor with a screwdriver.

✓ Check the electrical completeness.

Remove the service panel, disconnect the connector to the electronic control circuit (see electrical diagram) and measure the electrical resistance between the pump supply conductors. (fig. 23).

Electrical resistance of the windings; pump in fig. 22a at speed 3 and pump in fig. 22b (fixed speed): about 150 Ω .

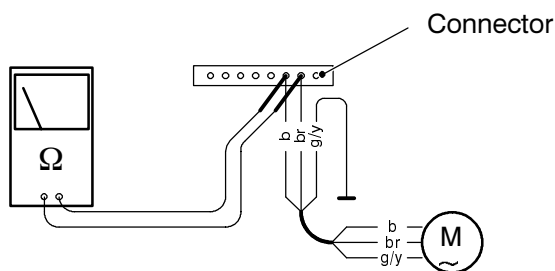


fig. 23

✓ Check the absence of starting defects.

With the boiler off remove the front panel, lower the instrument panel and remove the air release plug of the pump. Start the boiler and with a screwdriver, have the rotor turn in the direction of the arrow. If there is a defect in starting, the rotor will begin to turn normally only starting it manually.

✓ Check that the impeller is integral with the rotor.

Remove the pump and check that the impeller is firmly jointed with the rotor.

7.3 Removal

↘ **Warning: isolate the boiler from the mains electricity supply before removing any covering or component.**

- 1 Empty the main circuit of the boiler.
- 2 Remove the front panel of the body, the right side panel and overturn the instrument panel.
- 3 Completely loosen screw *B* (fig. 24) and remove the protection lid of the electrical connections.
- 4 Loosen the electrical terminals (line–neutral–ground). Loosen the cable protection ring *C* and extract the electrical supply cable.

- 5 Completely loosen the screws that fix the pump head to the body.
- 6 Before reassembly carefully clean the support seat of the gasket.
- 7 Reassemble the pump carrying out the removal operations in the reverse order.

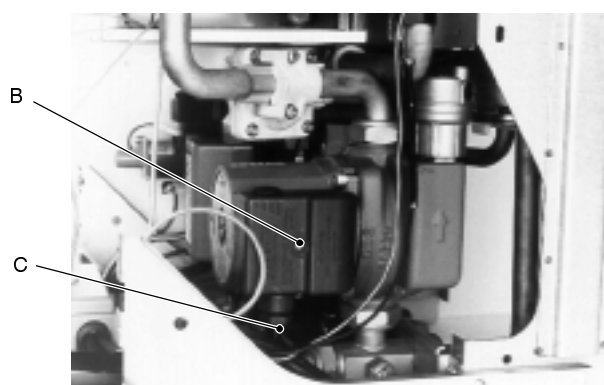


fig. 24

8 3-way valve

8.1 Function

The 3-way valve (A in fig. 25) has the function of modifying the hydraulic circuit of the boiler by means of an electrical command given by the electronic control circuit in order to send the water that exits the main heat exchanger towards the c/h system or towards the d.h.w. heat exchanger.

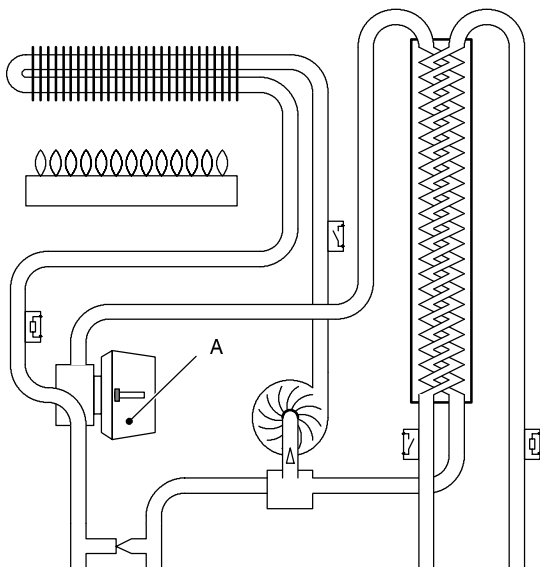


fig. 25

On one side of the motor body an indicator is visible with which it is possible to know the position of the diverter.

fig. 26 and fig. 27 indicate the relationship between the electric command coming from the electronic control circuit, the position of the indicator B and the consequent hydraulic function.

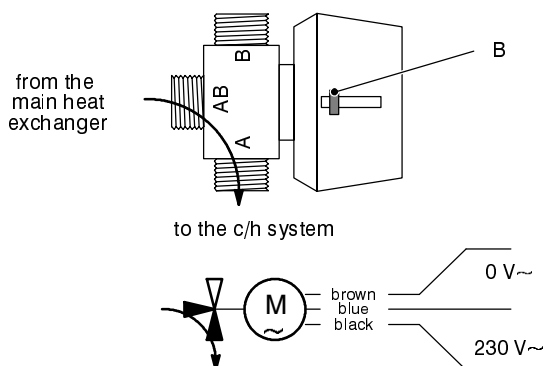


fig. 26

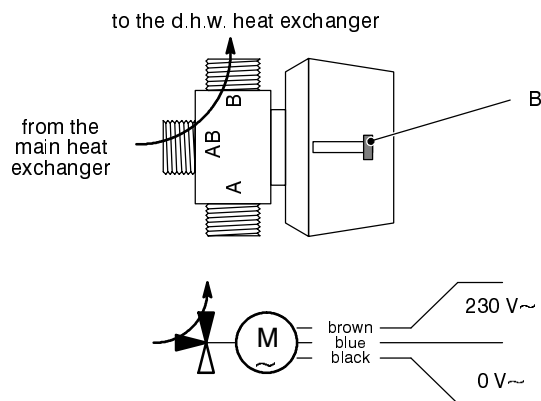


fig. 27

By removing the electrical supply to the boiler the 3-way valve remains in the work condition in which it finds itself.

8.2 Checks

✓ Check the electrical completeness.

⚡ **Warning: isolate the boiler from the mains electricity supply before removing any covering or component.**

fig. 28 demonstrates the relationship between the position of the indicator visible on the motor body of the valve and the electrical resistance of the motor.

If the valve is complete the resistance measured will be approx. 8 kΩ.

in c/h

in d.h.w.

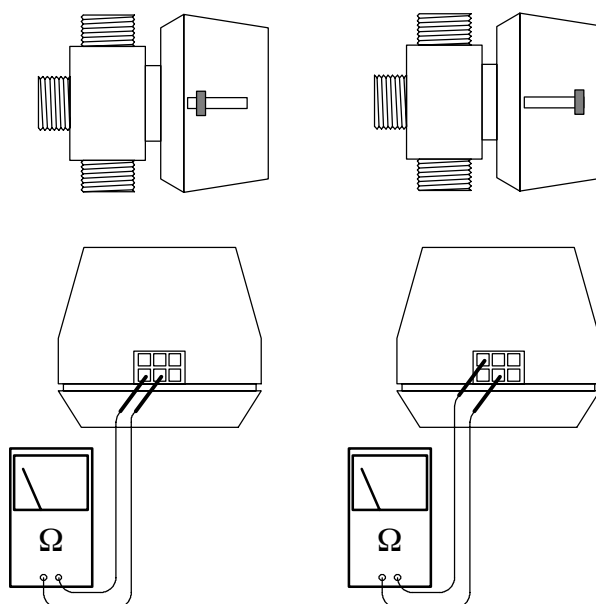


fig. 28

✓ Check the diverter mechanism

Remove the front panel, lower the instrument panel and remove the motor group.

Push the stem of the diverter mechanism *C* (fig. 29) checking that there are no mechanical impediments.

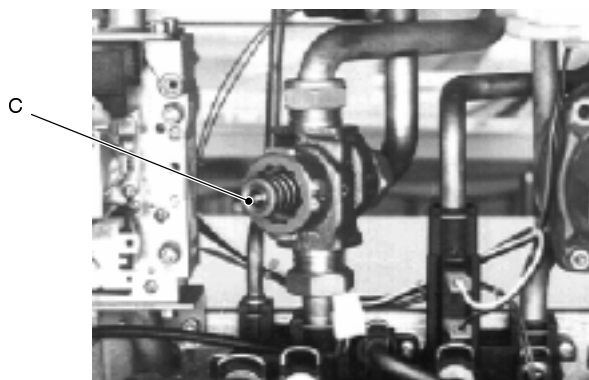


fig. 29

8.3 Removal

Warning: isolate the boiler from the mains electricity supply before removing any covering or component.

Removal of the motor group

- 1 Remove the front panel, lower the instrument panel.
- 2 Press the push-button *D* placed in the rear side of the motor (fig. 30) and rotate the motor group anti-clockwise, releasing it from the hydraulic group.

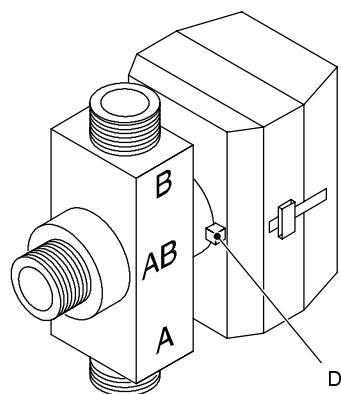


fig. 30

- 3 Release the electrical connector from the motor group.

Removal of the hydraulic group

- 1 Empty the primary hydraulic circuit
 - 2 Remove the motor group (see operations 1, 2 and 3);
 - 3 Loosen the pipe fitting *E* (fig. 31);
 - 4 completely loosen the pipe fittings *F* (fig. 31) and remove the hydraulic group together with the pipe connected to the rear pipe fitting
 - 5 Loosen the rear pipe fitting and remove the pipe
 - 6 Reassemble the 3-way valve carrying out the removal operations in reverse order
- Warning:** the valve body should fitted with the marking "A" pointing downwards (fig. 30).

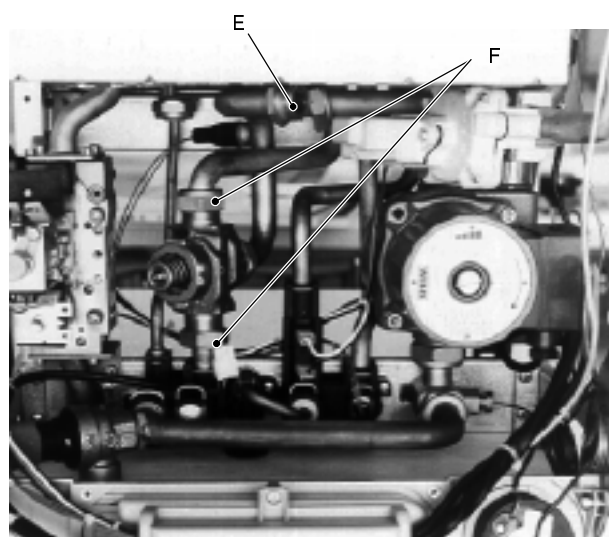


fig. 31

9 Electronic control circuit

9.1 Function

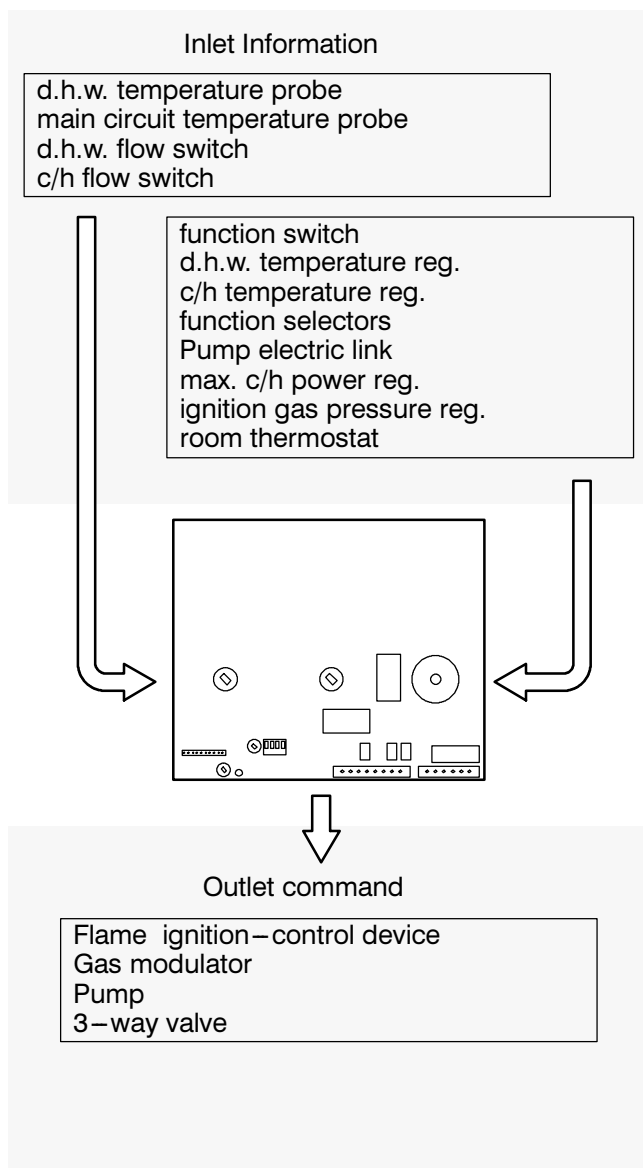


fig. 32

The fundamental function of the control circuit is that of controlling the boiler in relation to the external needs (heating the room, heating the water for d.h.w. use) operating in order to keep the temperature of the hydraulic circuits constant.

This is obviously possible within the useful power and maximum working temperature limits foreseen.

Generally, the control circuit receives inlet information coming from the boiler (the sensors) or from the outside (knobs, room thermostat, etc.), processes them and consequently acts with outlet commands on other components of the boiler (fig. 32).

9.2 Selection and adjustment devices

On the control circuit several selection, adjustment and protection devices are located. (fig. 33).

Several of these devices are directly accessible by the user (function switch, temperature adjustment potentiometers etc.) others are accessible by removing the service panel.

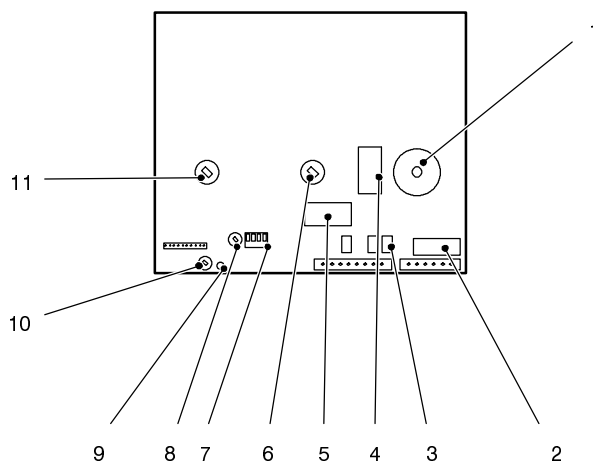


fig. 33

- 1 function switch
- 2 fuse F2 (1,6 A)
- 3 Pump function electric link
- 4 K1 relay (3-way valve control)
- 5 K2 relay (ignition device control)
- 6 d.h.w. temperature reg. potentiometer
- 7 function selectors
- 8 ignition gas pressure adjustment (ACC.)
- 9 green LED (boiler on)
- 10 c/h maximum power adjustment (RISC.)
- 11 c/h temperature reg. potentiometer

9.3 Checking the temperature

The control circuit makes it possible to separately adjust the c/h water flow and d.h.w. outlet temperature.

The temperature of the water is converted into an electric signal by means of temperature probes.

The user, setting the desired temperature with the knobs of the instrument panel operates the variable elements (6 and 11 in fig. 33) of the control circuit.

If the power requested is lower by about 40% of the maximum useful output, the control is done by igniting at the minimum power and turning off the burner (on-off function). If the power is higher the boiler will modulate down to 40% of its maximum power output.

When the boiler functions in c/h (fig. 34), the signal coming from the primary temperature probe is compared to the signal given by the instrument panel through the adjustment made by the user (knob 11). The result of such a comparison operates the modulation of the gas valve, consequently changing the instantaneous useful output of the boiler.

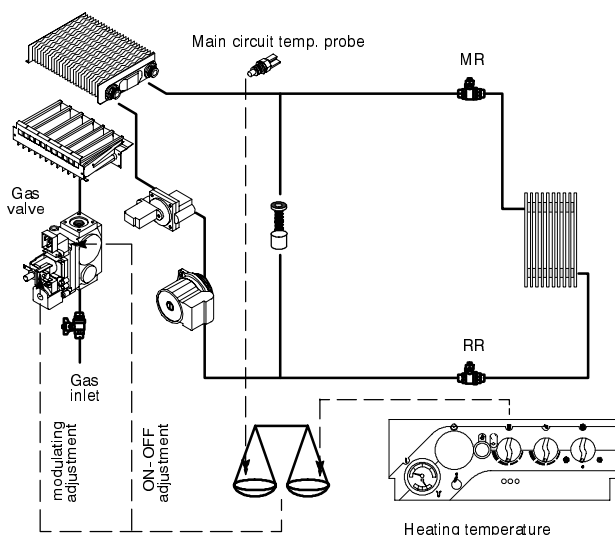


fig. 34

When the boiler functions in d.h.w. (fig. 35), the signal coming from the d.h.w. temperature probe is compared with the signal given by the instrument panel through the adjustment made by the user (knob).

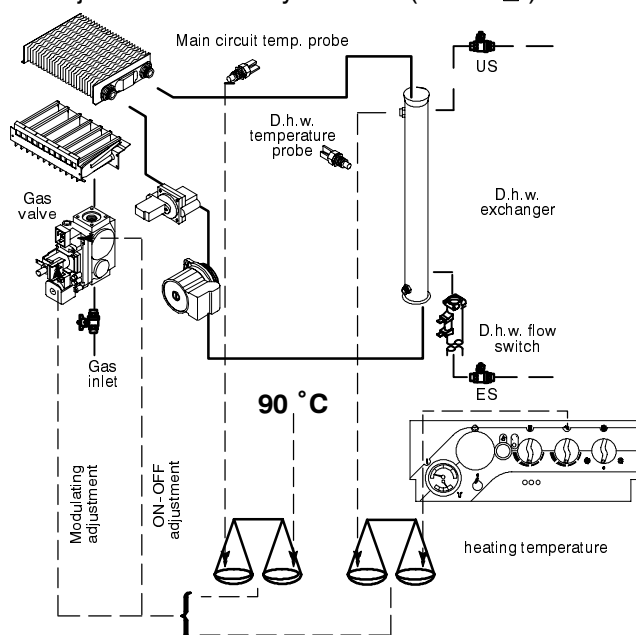


fig. 35

Normally, the result of the comparison between these two signals directly operates the adjustment elements of the gas valve, adjusting the useful output generated in order to stabilize the temperature of the exiting water.

If during the functioning in d.h.w. mode, the temperature of the primary circuit goes over 90°C, the useful output is automatically reduced so that the primary circuit cannot reach excessive temperatures.

The control sequences in ❄ function and in ❄ function are illustrated in detail in sections 9.11 and 9.12.

9.4 Function selectors

The function selectors "7" (fig. 33 and fig. 36) are microswitches with which it is possible to select the various modes of functioning of the boiler.

In fig. 36 the selectors are illustrated in the configuration in which the p.c.b. is set in the factory (natural gas boiler).

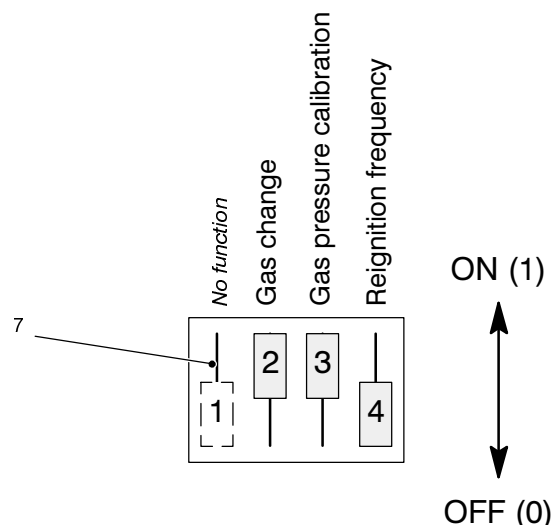


fig. 36

○ Selector 2

It selects the functioning of the boiler on the basis of the type of gas used.

It allows the selection of the maximum supply current given to the modulator device.

To set correctly the selector follow the table of fig. 37 referring to the colour of the gas modulating cartridge (see section "Gas valve" of this manual).

Gas modulating cartridge colour (on the gas valve)	Gas supply	Position of selector n. 2
White	Natural gas	Off
Black	L.P.G.	Off
Red	Natural gas	On
	L.P.G.	Off

fig. 37

○ Selector 3

It forces the functioning of the boiler in order to permit the optimal gas pressure at the burner to be adjusted during the ignition phase.

The adjustment (see section 9.6) is done by means of the potentiometer "8" (fig. 33).

After the adjustment operations bring the selector back to the normal position (ON).

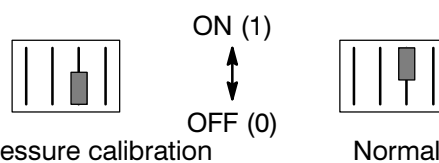


fig. 38

○ Selector 4

It makes it possible to select the minimum time that must pass between two ignitions of the burner in c/h function.

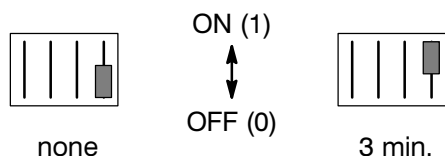
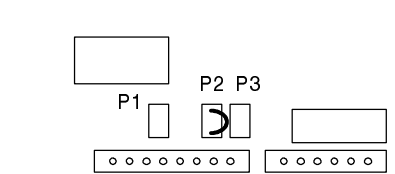
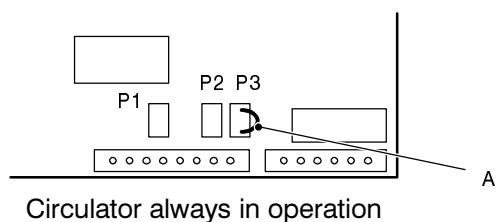


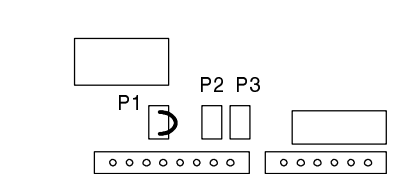
fig. 39

9.5 Pump function mode

During c/h functioning the pump can be controlled in three different manners. The pump functioning mode can be selected using the position of the electric link A in fig. 40.



Circulator controlled by the room thermostat



Circulator controlled by the temperature of the primary circuit

fig. 40

9.6 Ignition gas pressure regulator

By using the device "8" (fig. 33) marked "ACC." on the circuit board, it is possible to adjust the gas pressure at the injectors in the ignition phase.

This pressure is maintained at the injectors until ignition occurs (ionization signal).

To carry out the adjustment move the function selector n° 3 downwards (adjustment) and use the adjustment device "8" (ACC).

Bring the gas pressure at the injectors to the value indicated in the tables "data for gas adjustment" stated for each model in the second part of the manual (ignition pressure).

By rotating the device clockwise the pressure increases.

Check the regular ignition of the burner by turning the boiler on and off repeatedly.

After the adjustment operation move the selector upwards (normal).

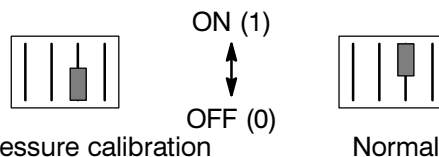


fig. 41

9.7 Max. c/h power regulator

By using device 10 (fig. 33) marked "RISC." on the circuit board, you can limit the maximum useful output delivered in the c/h function. This adjustment does not influence the maximum useful output delivered in d.h.w. function.

By rotating the device clockwise the pressure increases.

9.8 Checks

✓ Check that the fuse is complete

If the control circuit does not supply any device (pump, 3-way valve, etc.) check that the fuse F2 is complete (fig. 42).

The F2 fuse can be reached by removing the service panel.

If the fuse is blown replace it with one that has the same characteristics after having identified the cause of the interruption.

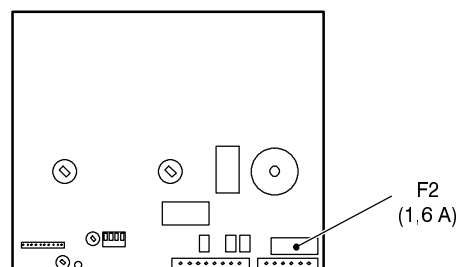


fig. 42

✓ Check for the presence and the correct positioning of the electric link which selects the functioning mode of the pump, referring to section 9.5.

9.9 Removing operations

⚡ **Warning: isolate the boiler from the mains electricity supply before removing any covering or component.**

- 1 Remove the front panel of the boiler and lower the instrument panel.
- 2 Remove the rear lid of the instrument panel clearing it from the hooks placed in correspondence with the arrows printed on the lid (see chapter *general access and emptying hydraulic circuits*, see section 2.4).
- 3 delicately flex the hooks B in the directions indicated (fig. 43) in order to release the circuit from the panel

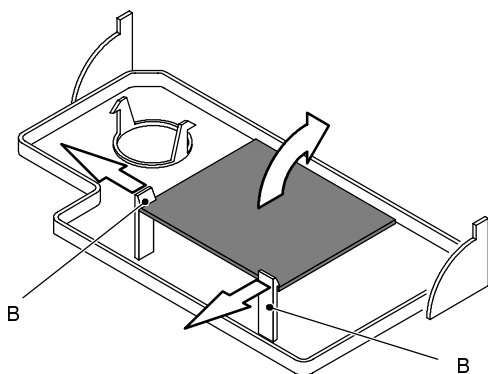


fig. 43

- 4 delicately flex the hooks indicated and disconnect the connectors C (fig. 44);

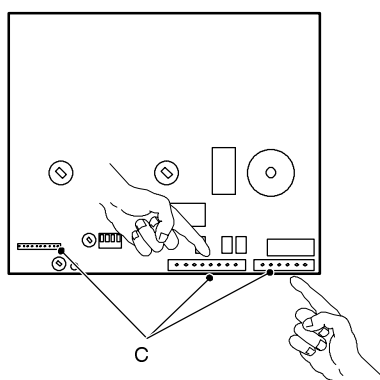


fig. 44

- 5 remove the control control circuit.

9.10 Mounting operation

Reassemble the control circuit carrying out the removing operations in reverse order.

Before fitting the control circuit, ensure that the control spindles (fig. 45) are correctly inserted in the c/h (▮) and d.h.w. (↘) temperature adjustment knobs.

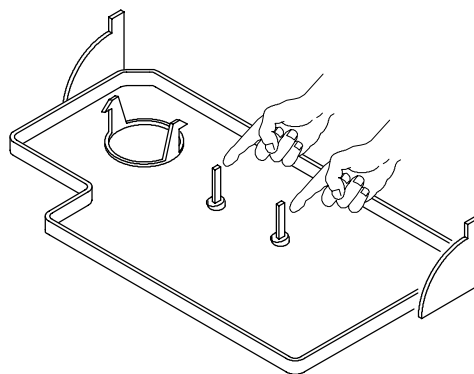


fig. 45

warning: after having installed the control circuit check that the c/h (▮) and d.h.w. (↘) temperature adjustment knobs can move freely (half a turn).

9.11 Heat control in "❄️" function

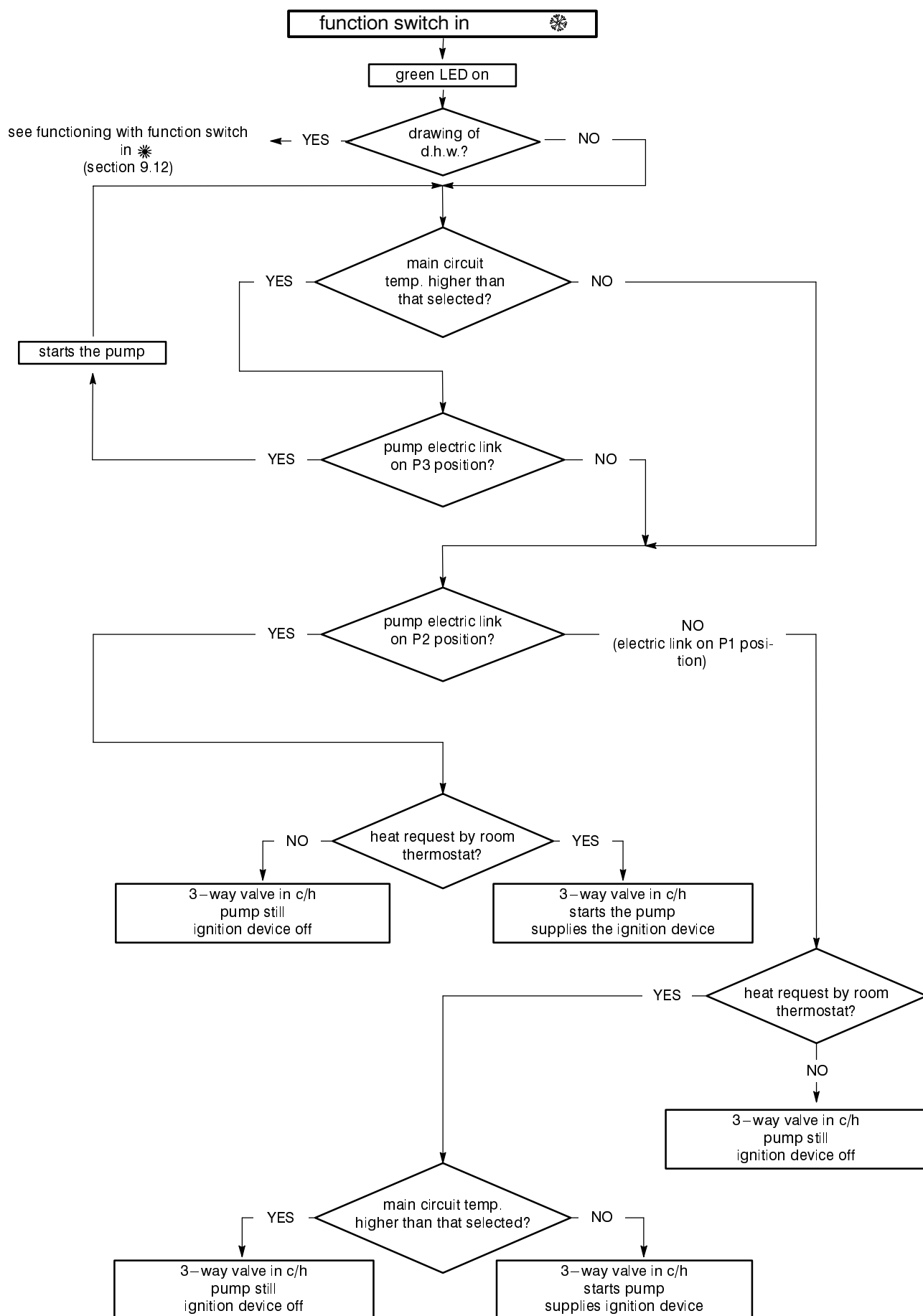
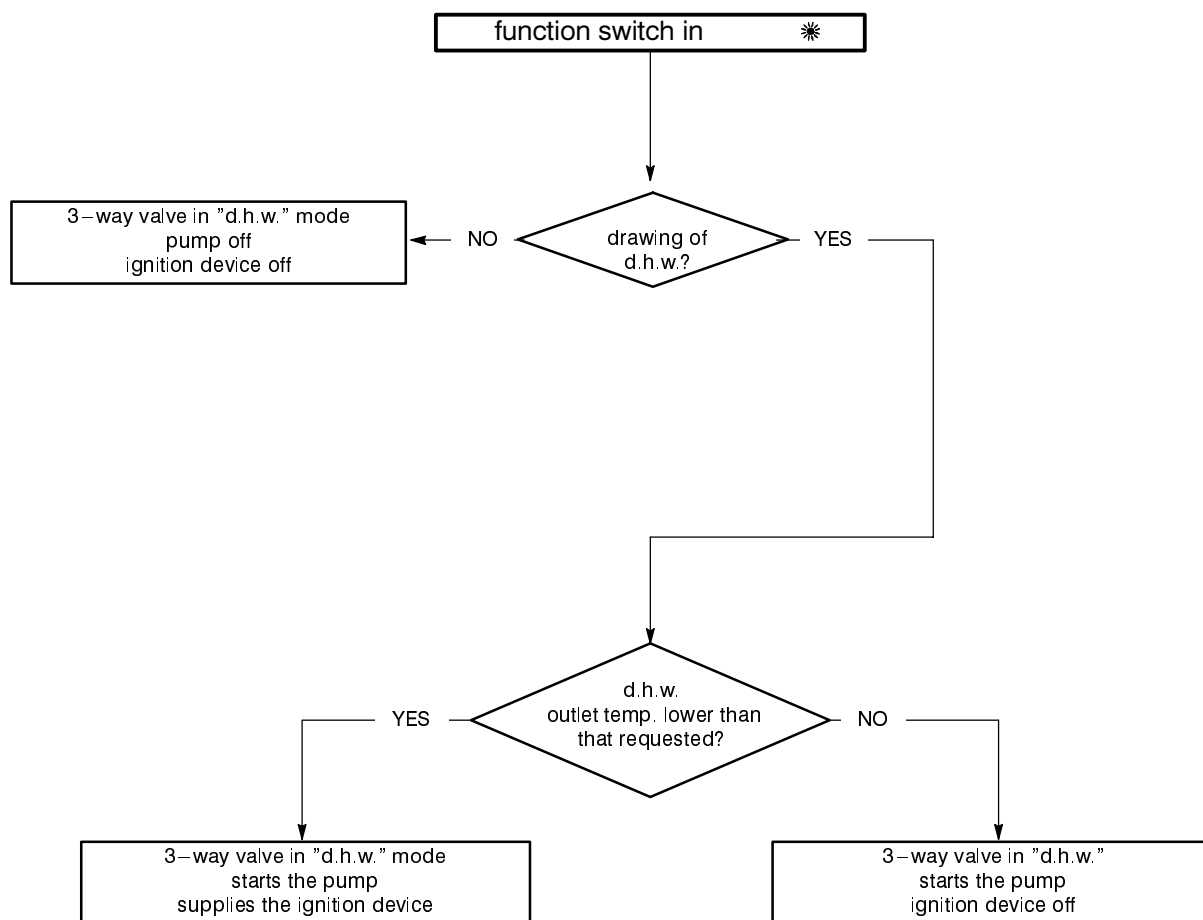


fig. 46

9.12 Heat control in "※" function

10 Full sequence ignition device

10.1 Function

The flame ignition and control device used on electronic ignition boilers with forced flue gas expulsion carries out the following fundamental functions:

- does a sequence of operations (ignition cycle) which lead to the ignition of the gas at the burner
- checks the presence of the flame during the entire period in which it is activated
- supplies the fan and checks its functioning by means of the signal coming from the flue gas pressure switch.

The ignition device is supplied by the electronic control circuit when the ignition of the burner is requested.

The ignition device has a **safety function** and any incorrect interventions or tampering can result in conditions of dangerous functioning of the boiler.

The ignition device can lock the functioning of the boiler (lock state) and stop its functioning up to the resetting intervention. The lock is signalled by the ignition of the lock lamp and the device can be reset only by using the reset push-button placed on the instrument panel.

Some components which are connected to the device that, can activate the lock state. The causes of a lock state could be:

- the intervention of the safety thermostat (primary hydraulic circuit)
- a fault on gas feeding
- faulty ignition (ignition electrode, its wiring and connection)
- faulty flame detection (detection electrode, its wiring and connection)
- gas injectors plugged
- faulty gas valve (on-off operators) or not electrically supplied
- faulty ignition device

other components like the flue gas pressure switch can temporarily stop the ignition of the burner but allow its ignition when the cause of the intervention has stopped.

fig. 50 shows the sequence of the operations that are carried out at the starting of every ignition cycle and during normal functioning.

10.2 Checks

- ✓ Lock sequence

Start the boiler until the burner is ignited.

With the burner on interrupt the gas supply. The device must carry out a complete ignition cycle and therefore stop.

By turning the boiler on and off by means of the function switch the device must not unlock and the burner must not turn on.

- ✓ Control of flue gas expulsion

With the boiler functioning with the burner on, open the pressure test point of the Venturi device. At the moment of opening the burner must turn off.

10.3 Removal

- ⚡ **Warning: isolate the boiler from the mains electricity supply before removing any covering or component.**

- 1 Remove the rear lid of the instrument panel, clearing it from the hooks placed in correspondence with the arrows printed on the lid (see chapter *access to and emptying hydraulic circuits*).
- 2 Delicately flex the hooks A in the directions indicated; unhook the control circuit and overturn it without disconnecting it from the wiring (fig. 47);

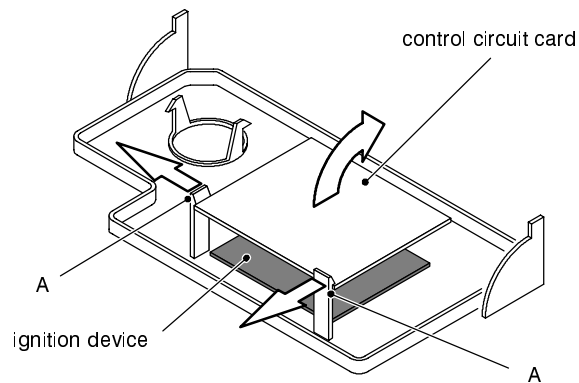


fig. 47

- 3 delicately flex the hooks indicated and disconnect the connectors (fig. 48);

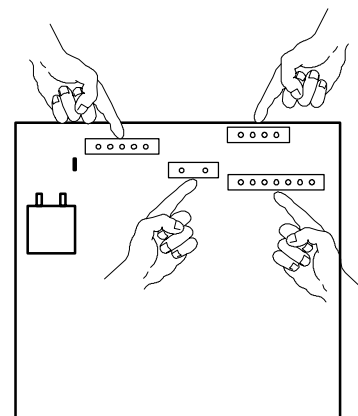


fig. 48

- 4 In similar fashion as the preceding flex the hooks *B* in the directions indicated; unhook and remove the ignition device (fig. 49);

Reassemble the full sequence ignition device carrying out the removing operations in reverse order.

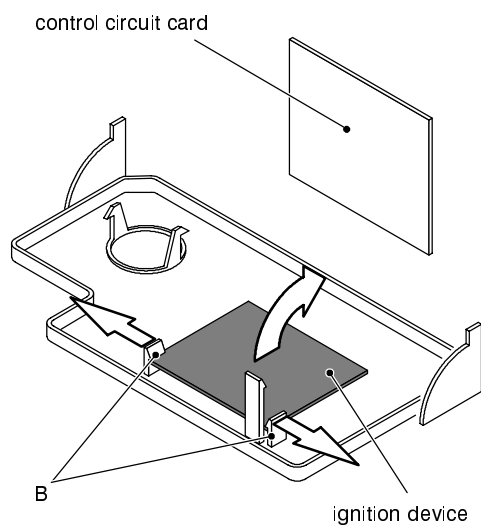


fig. 49

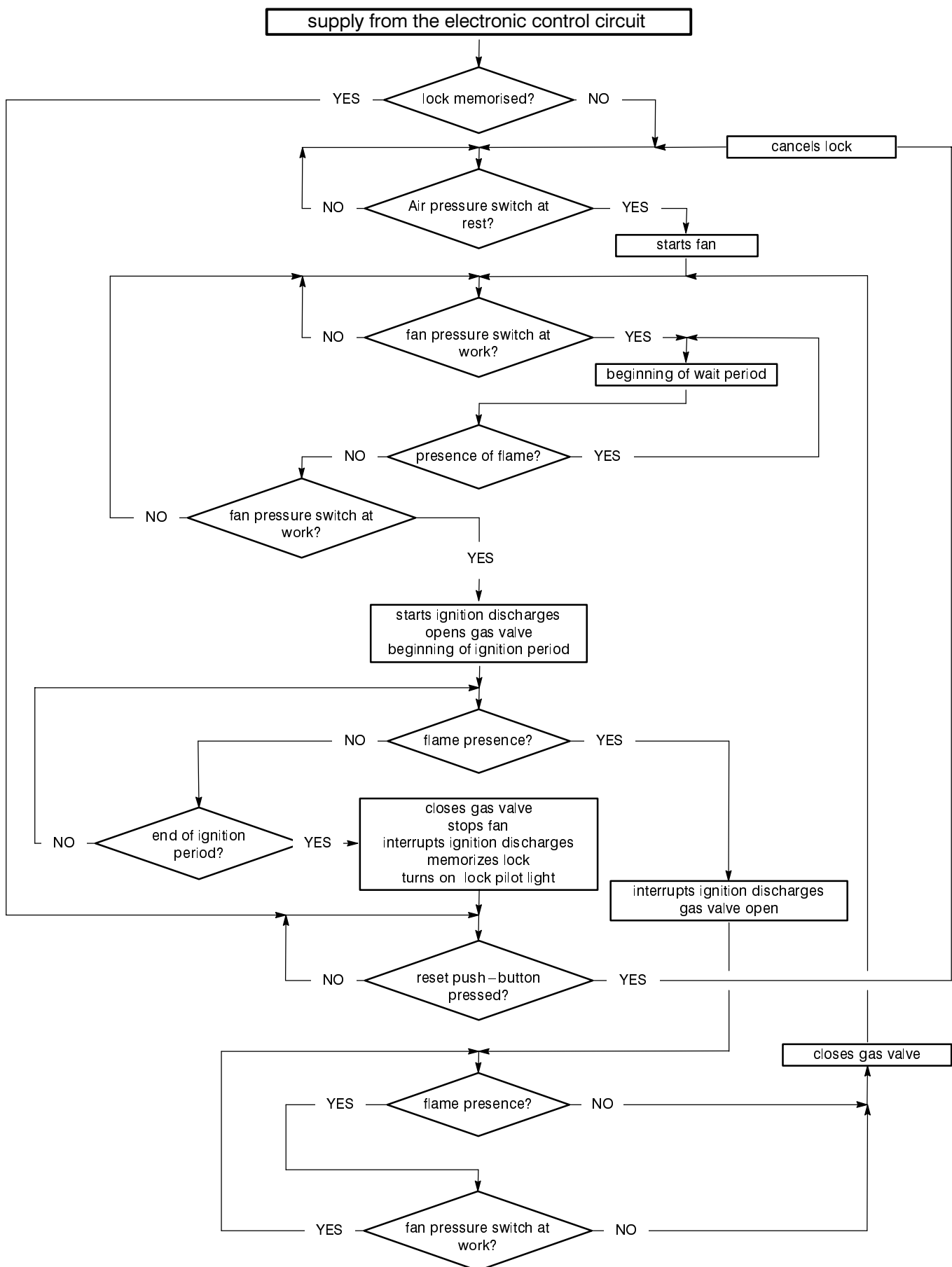
10.4 Ignition and control sequence

fig. 50

11 Gas valve

11.1 Function

The gas valve controls the gas inflow to the boiler burner.

By means of an electric command given to the on–off operators the passage of the gas through the valve can be opened or closed.

By means of an electric command given to the modulating operator the pressure can be varied and therefore the gas flow rate to the burner (modulation). The modulator device has mechanical organs which permit the adjustment of the minimum and maximum pressure exiting the valve.

11.2 Nomenclature of the parts

- 1 Lower on–off operator
- 2 Upper on–off operator
- 3 Electric connector of the on–off operator
- 4 Modulating operator
- 5 Electrical connectors of the modulating operator
- 6 Valve inlet gas pressure test point
- 7 Valve outlet gas pressure test point
- 8 Gas pressure maximum adjuster
- 9 Gas pressure minimum adjuster

11.3 SIT 827 Valve – adjustment

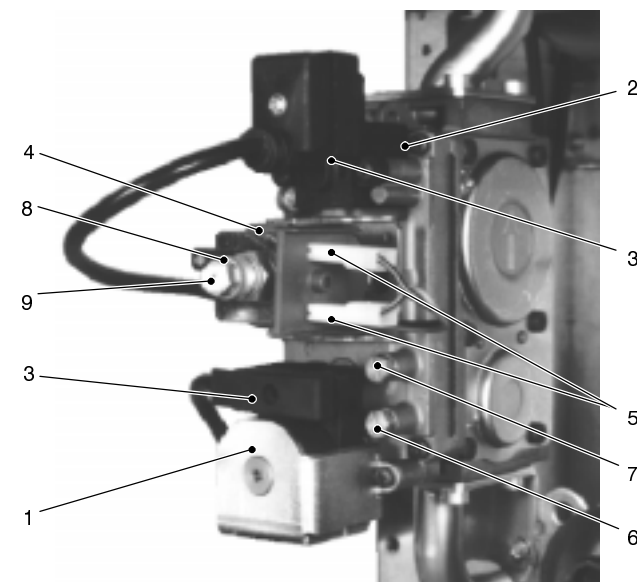


fig. 51

Warning: isolate the boiler from the mains electricity supply before removing any covering or component.

- 1 Open the gas pipe tap "6" at the inlet of the valve, connect a gauge and check the pressure of the supply network
- 2 Close the gas pipe tap "6";

- 3 Open the gas pipe tap "7" in the valve outlet and connect a gauge
- 4 Remove the protection hood from the max/min adjustment
- 5 Start the boiler at the maximum power
- 6 Rotate the maximum pressure "8" adjuster until you obtain the expected pressure (by rotating clockwise the pressure increases).
- 7 turn off the boiler and disconnect one of the two connectors "5" of the modulating operator
- 8 start the boiler
- 9 rotate the minimum pressure "9" adjuster until you obtain the expected pressure (by rotating clockwise the pressure increases)
- 10 Turn off the boiler, connect the modulating operator and disconnect the gauge

At the end of the adjustment ensure to seal the gas test point.

11.4 SIT 827 Valve – modulating operator

The cartridge of the modulating operator is preset to function within a precise field of pressures (range). The pressure field can be determined by the colour of the adjustment cartridge screw according to the table in fig. 52.

Colour	Pressure range	Gas
white	2–20 mbar	natural
red	3–37 mbar	natural and L.P.G.
black	7–50 mbar	L.P.G.

fig. 52

Refer to this table during any gas conversion operations.

To replace the cartridge, remove the protection hood of the max/min adjustment and with a spanner rotate cartridge A counter–clockwise (fig. 53);

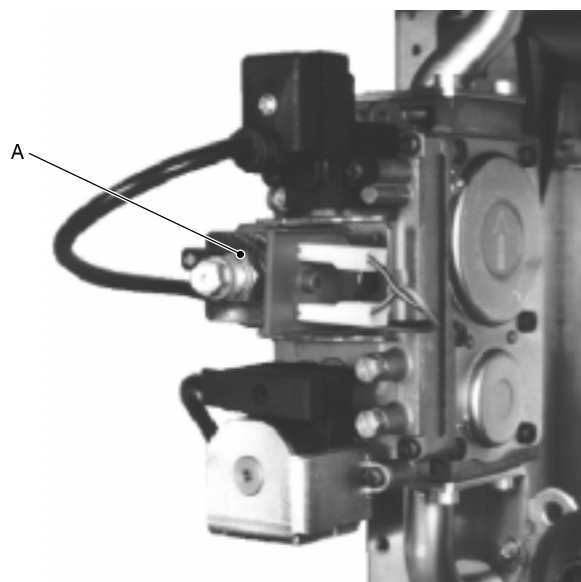


fig. 53

11.5 SIT 827 Valve – check

✓ Check the electrical integrity

⚡ **Warning: isolate the boiler from the mains electricity supply before removing any covering or component.**

Disconnect the on–off operators and the modulating operator and measure the electrical resistance between the supply contacts.

Electrical resistance of the operators:

lower on–off operator: about 850 Ω

upper on–off operator: about 4000 Ω

modulating operator: about 125 Ω

11.6 SIT 827 Valve – removal

⚡ **Warning: isolate the boiler from the mains electricity supply before removing any covering or component.**

- 1 Remove the front panel, lower the instrument panel;
- 2 Remove the lower protection
- 3 Disconnect the on–off operators and the modulating operator
- 4 Remove the eight cylindrical head screws that fasten the valve to the flanges and remove the valve
- 5 Reassemble the valve carrying out the removal operations in reverse order.

Before closing the instrument panel rotate the coil of the modulating operator directing the electrical connectors completely upwards (fig. 54).

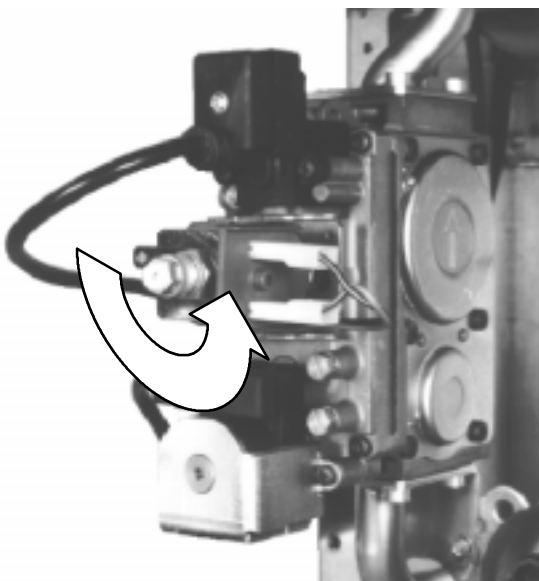


fig. 54

11.7 SIT 837–Valve – adjustment

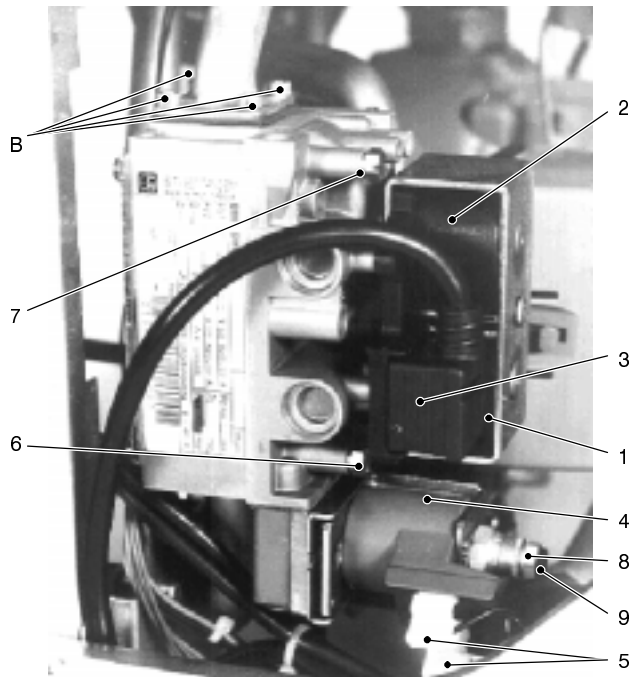


fig. 55

Proceed as described in section 11.3.

11.8 SIT 837 Valve– modulating operator

For the adjustment field as well as for the replacement of the cartridge, refer to section 11.4.

11.9 SIT 837 Valve–check

✓ Check the electrical completeness

⚡ **Warning: isolate the boiler from the mains electricity supply before removing any covering or component.**

Disconnect the on–off operators and the modulating operator and measure the electrical resistance between the supply contacts.

The terminals of the connector "3" (fig. 55) are connected to the operators as illustrated in fig. 56.

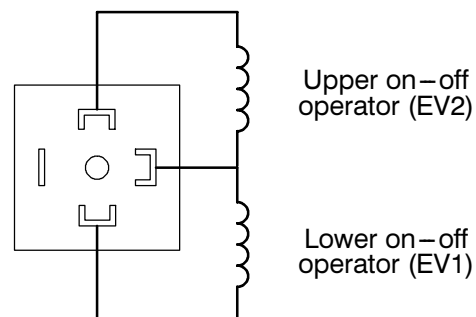


fig. 56

Electrical resistance of the operators:

lower on–off operator : about 900 Ω

upper on–off operator: about 900 Ω

modulating operator: about 125 Ω

11.10 SIT 837 Valve – removal

⚡ **Warning: isolate the boiler from the mains electricity supply before removing any covering or component.**

- 1 Remove the front panel, lower the instrument panel
- 2 Remove the lower protection
- 3 disconnect the on–off operators and the modulating operator
- 4 remove the four cylindrical head screws *B* (fig. 55) that fix the valve to the top flange
- 5 With a cross screwdriver completely unscrew screws *C* (in fig. 57 the right one is indicated) and remove the valve.
- 6 Reassemble the valve, carrying out the removal operations in reverse order

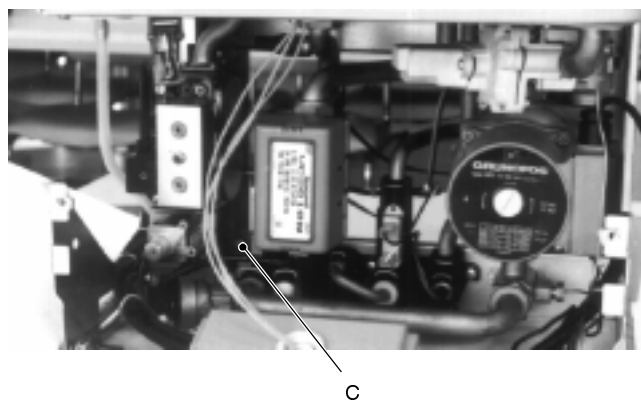


fig. 57

12 Main circuit flow switch

12.1 Function

The main circuit flow switch (A in fig. 58) is a device that controls the speed of water that crosses the main heat exchanger.

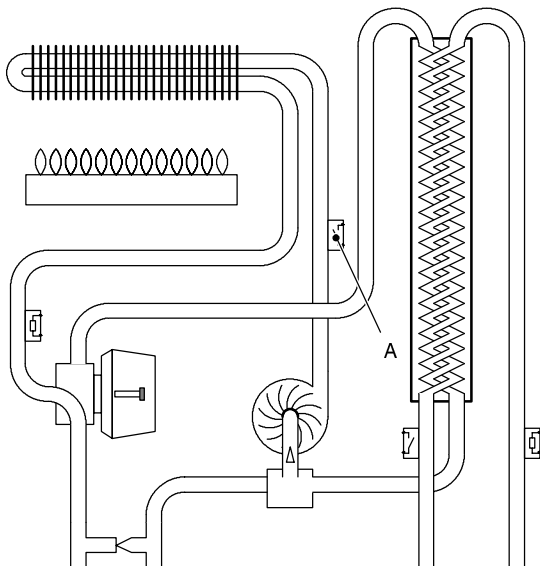


fig. 58

This device controls the regular functioning of the pump, the presence of water in the primary circuit of the boiler and the absence of obstructions of the main heat exchanger during the c/h function as well as during the d.h.w. function.

The main circuit flow switch is connected to the electronic control circuit and its intervention prevents or stops the burner ignition cycle but does not send the boiler in the lock state.

12.2 Checks

Warning: isolate the boiler from the mains electricity supply before removing any covering or component.

Electrical function

Remove the front panel of the boiler, lower the control panel and remove the lid B of the flow switch (fig. 60).

Disconnect the microswitch, remove it from the flow switch and check its electrical function.

If the microswitch works correctly, when the push-button C is released, the contact between the terminals indicated in fig. 59 must be closed (electrical resistance zero Ω).

By pressing the push-button the contact must open.

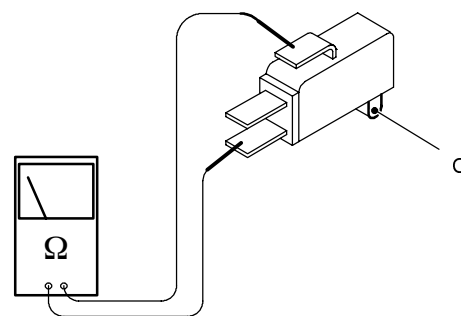


fig. 59

Hydraulic connection

Remove the flow switch from the pipe (see section 12.3) and check that there are no obstructions in the channels that connect the flow switch chambers to the pipe. If necessary, clean the channels with a screwdriver having a suitable size, being careful not to damage the internal membrane of the flow switch.

Check if there are any obstructions in the holes of the pipe.

12.3 Removal

Warning: isolate the boiler from the mains electricity supply before removing any covering or component.

- 1 Empty the primary circuit of the boiler
- 2 Remove the front panel of the body, the right side panel and lower the control panel
- 3 Loosen the two screws B that hold the lid and remove the lid (fig. 60);

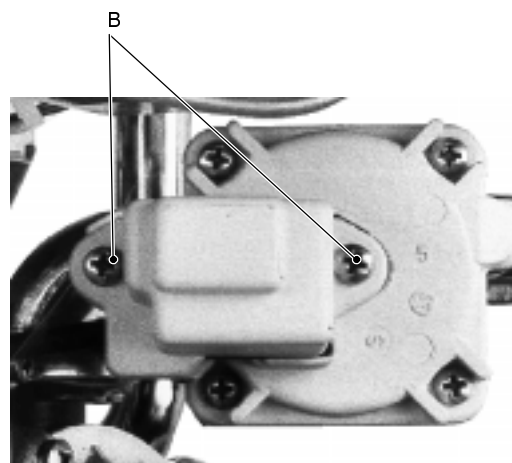


fig. 60

- 4 Disconnect the electrical terminals from the microswitch

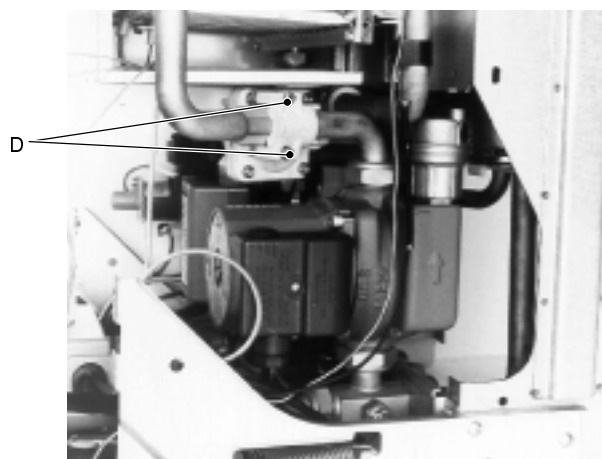


fig. 61

- 5 Loosen the two screws *D* (fig. 61) and remove the flow switch body from the pipe

- 6 Reassemble the flow switch, carrying out the operations in reverse order being careful to make the reference engraved in the pipe correspond with the same reference on the body of the flow switch.
- 7 Connect the switch using the correct terminals (fig. 62).

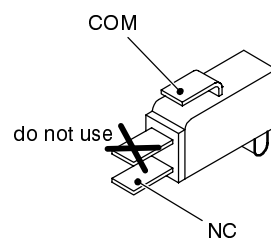


fig. 62

13 D.h.w. flow switch and filter

13.1 Function

The domestic hot water (d.h.w.) flow switch (A in fig. 63) is a device that sends an electric signal to the electronic control circuit at the moment in which hot water is drawn.

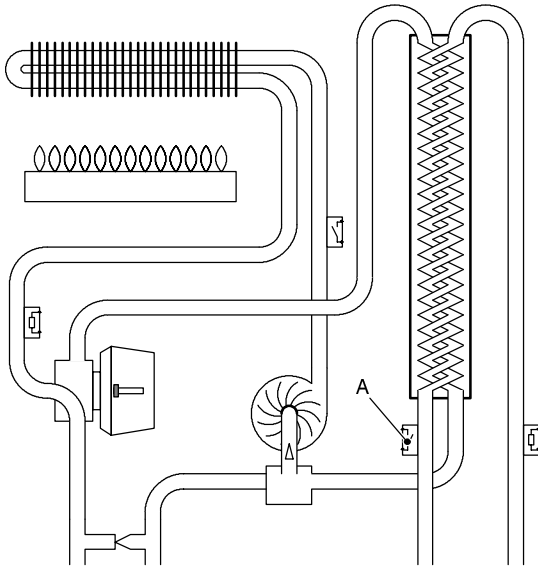


fig. 63

The device is part of the d.h.w. hydraulic body B (fig. 64).

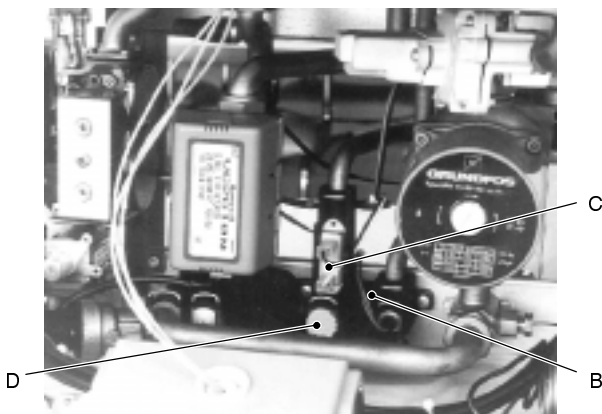


fig. 64

When the flow rate of the hot water drawn goes over about 2 litres/min', the float contained in the flow switch is dragged upwards and the magnet in it, getting closer to the external sensor C (fig. 64) closes the electric contact.

The d.h.w. filter is located behind the pipe fitting D (fig. 64) inserted. Its function is to stop the passage of any impurities through the d.h.w. circuit.

13.2 Check

Warning: isolate the boiler from the mains electricity supply before removing any covering or component.

✓ electrical function

Remove the front panel of the boiler, lower the instrument panel and disconnect the connectors E (fig. 65).

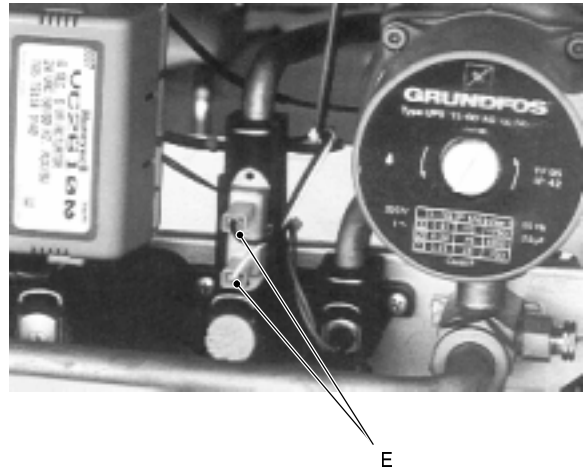


fig. 65

Measure the electrical resistance at the leads of the sensor. Without water being drawn, the contact must be open. By opening a hot water cock the contact must close (electrical resistance zero Ω).

13.3 Removal of the sensor

Warning: isolate the boiler from the mains electricity supply before removing any covering or component.

- 1 Remove the front panel of the boiler and lower the instrument panel
- 2 Close the d.h.w. inlet and outlet cocks and empty the d.h.w. circuit
- 3 disconnect the connectors F and remove the fork G (fig. 66);
- 4 remove the sensor, extracting it upwards
- 5 assemble the sensor carrying out the removal operations in reverse sequence.
To facilitate the insertion of the sensor it is recommended to lightly lubricate its edges.

13.4 Removal of the float

- 1 Remove the front panel of the boiler and lower the instrument panel
- 2 Close the d.h.w. inlet and outlet cocks and empty the d.h.w. circuit
- 3 Remove fork G, the fork that holds the pipe H to the top plug of the d.h.w. heat exchanger (fig. 66) and remove the pipe in order to free the outlet hole of the flow switch.

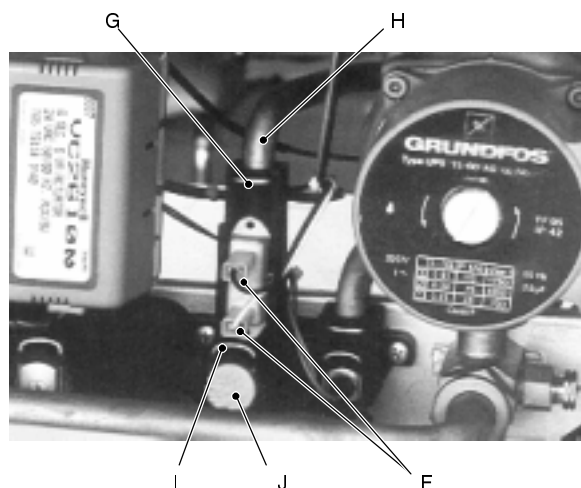



fig. 66

- 4 Remove the emptying plug placed under the flow switch and with a screwdriver having a suitable diameter push the float upwards through the emptying hole
- 5 Insert the float carrying out the removal operations in reverse sequence, keeping in mind the direction of the insertion (fig. 67).

 **Warning: to lubricate the O-ring gaskets exclusively use a silicone base grease compatible to be in contact with foods and approved by the local water Authorities.**

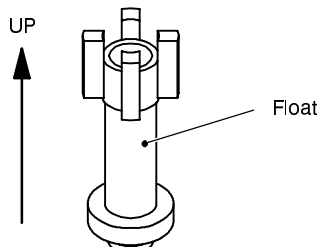


fig. 67

13.5 Removal of the filter

- 1 remove the front panel of the boiler and lower the instrument panel
- 2 close the d.h.w. inlet and outlet cocks and empty the d.h.w. circuit
- 3 Remove the fork *I* and remove the plug *J* (fig. 66).
- 4 extract the filter placed inside the hole at the base of the flow switch
- 5 insert the filter, carrying out the removal operations in reverse sequence

 **Warning: to lubricate the O-ring gaskets exclusively use a silicone base grease**

compatible to be in contact with foods and approved by the local water Authorities.

13.6 Flow limiter

If the flow rate of the d.h.w. circuit is too high, it is possible to limit it installing a flow limiter. The following sizes are available:

Nominal flow rate (litres/min)	Colour
8	White
10	Black
12	Gray
14	Green
16	Yellow

To install the flow limiter operate as in the following sequence:

- 1 Remove the front panel of the boiler and lower the instrument panel
- 2 Close the d.h.w. inlet and outlet cocks and empty the d.h.w. circuit
- 3 Remove fork *G*, the fork that holds the pipe *H* to the top plug of the d.h.w. heat exchanger (fig. 66) and remove the pipe in order to free the outlet hole of the flow switch.
- 4 Remove the plastic cylinder *K* and replace it with the flow limiter *L* and the plastic gaskets *M* as shown in fig. 68.

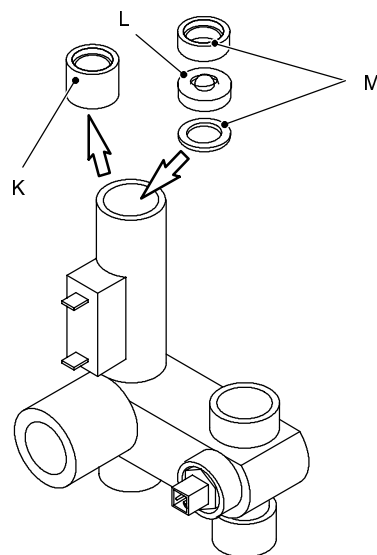


fig. 68

- 5 Reassemble the pipe *H* fixing it with the forks to the d.h.w. unit and to the d.h.w. heat exchanger.

14 Temperature probes

14.1 Function

The temperature probe has the function of converting the temperature of the water of the hydraulic circuit where it is installed into an electric signal (resistance). The relation between temperature and electrical resistance is stated in fig. 69.

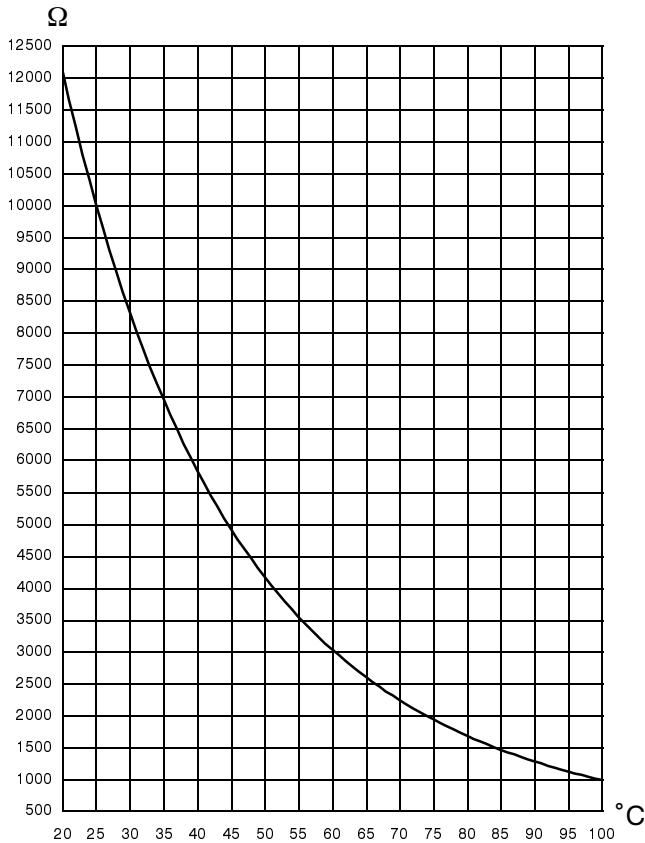


fig. 69

In the boilers with mixed function (c/h + d.h.w.) two temperature probes are assembled, one on the outlet pipe from the main heat exchanger (main circuit temperature probe) A, one at the outlet of the d.h.w. heat exchanger (d.h.w. temperature probe) B (fig. 70).

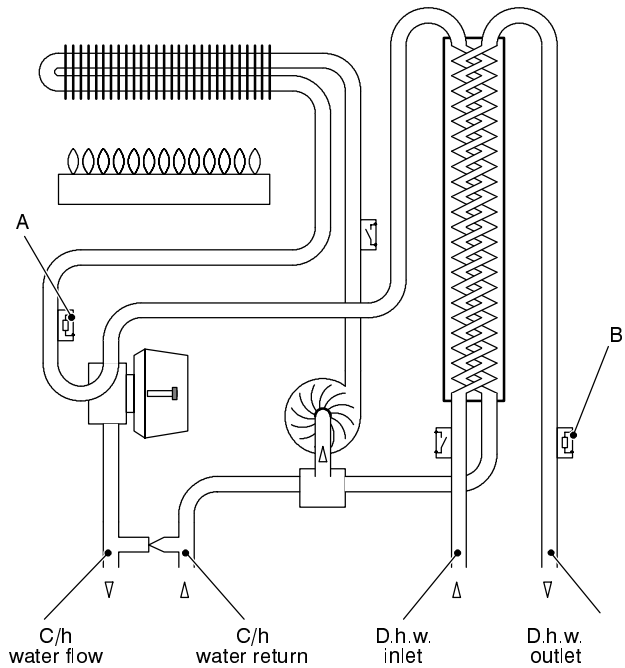


fig. 70

14.2 Checks

✓ Temperature – resistance relationship

⚡ **Warning: isolate the boiler from the mains electricity supply before removing any covering or component.**

Disconnect the cable from the temperature probe.

Measure the temperature of the pipe near the temperature probe and check the electrical resistance according to the graph in fig. 69.

Remember that a temperature probe failed in short circuit sends a signal to the control circuit at a temperature equivalent to 100°C. A disconnected or interrupted temperature probe sends a signal at a temperature equivalent 0°C thus the burner will always be on maximum power.

14.3 Removal of the main circuit temperature probe

⚡ **Warning: isolate the boiler from the mains electricity supply before removing any covering or component.**

- 1 remove the front panel of the body, the right side panel and lower the instrument panel
- 2 close the c/h water flow and return cocks and empty the primary circuit of the boiler
- 3 remove the electric connector of the temperature probe
- 4 Remove the fork, remove the temperature probe from the outlet pipe of the main heat exchanger
- 5 assemble the temperature probe carrying out the removal operations in reverse order.

14.4 Removal of the d.h.w. temperature probe

⚡ **Warning: isolate the boiler from the mains electricity supply before removing any covering or component.**

- 1 remove the front panel of the body, the right side panel and lower the instrument panel
- 2 Close the d.h.w. inlet and outlet cocks and empty the d.h.w. circuit of the boiler
- 3 Remove the electric connector C of the temperature probe (fig. 71);
- 4 remove the fork D and remove the temperature probe from the d.h.w. hydraulic body
- 5 Assemble the temperature probe carrying out the removal operations in reverse order



Warning: to lubricate the O-ring gaskets exclusively use a silicone base grease compatible to be in contact with foods and approved by the local water Authorities.

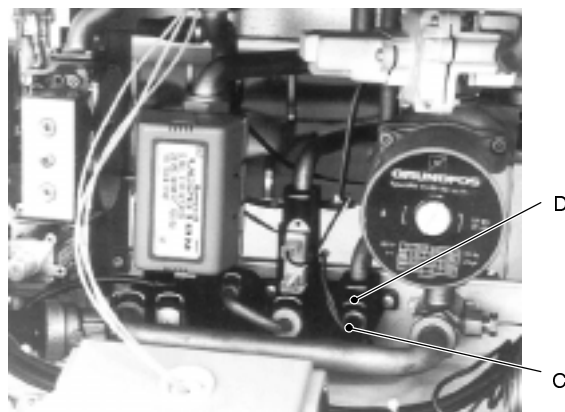


fig. 71

15 By-pass valve

15.1 Function

The by-pass valve is located between the c/h water flow and return (A in fig. 72) and its function is that of guaranteeing a minimum flow across the main heat exchanger also if the circulation across the c/h system is completely closed.

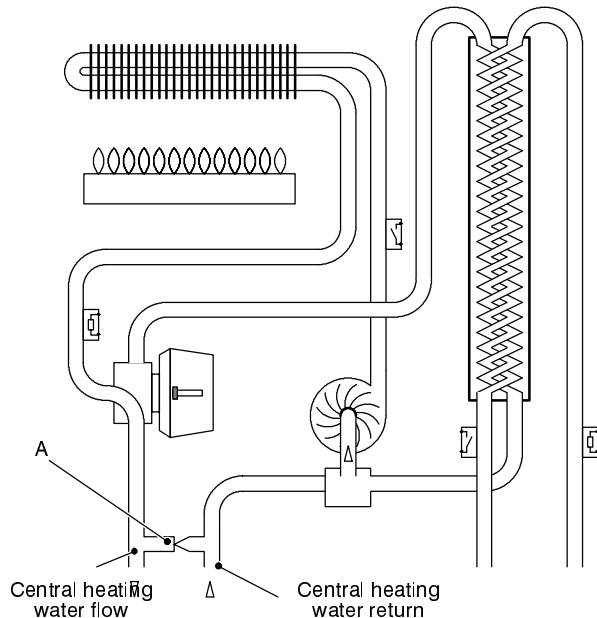


fig. 72

The by-pass valve is adjustable by using screw B (fig. 73); rotating it clockwise, the useful head given to the system increases.

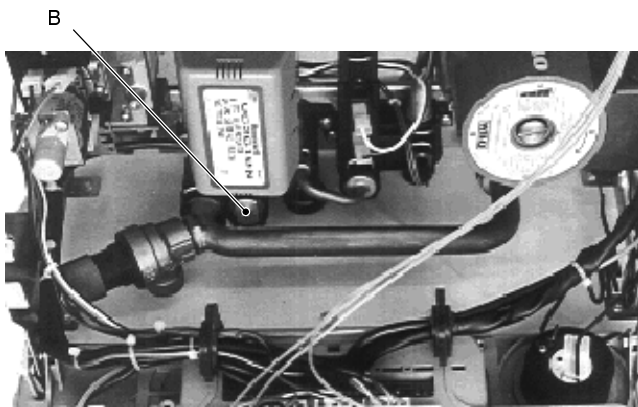


fig. 73

15.2 Adjustment

To ensure that the by-pass valve is suitably adjusted and carries out its function giving the c/h circuit the maximum useful head, proceed as follows:

Warning: isolate the boiler from the mains electricity supply before removing any covering or component.

- 1 remove the front panel of the body and lower the instrument panel.
- 2 Close the water flow and return cocks of the c/h circuit

- 3 completely rotate the adjustment screw of the by-pass counter-clockwise
- 4 remove the lid C of the c/h flow switch (fig. 74);

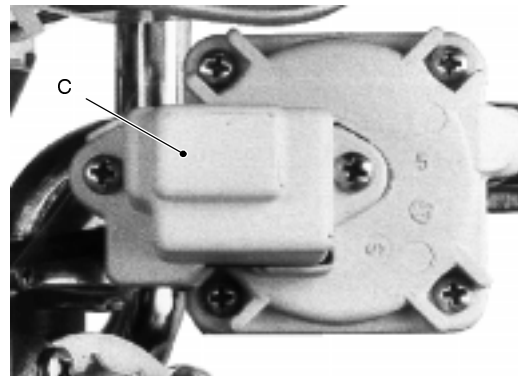


fig. 74

- 5 Start the boiler in c/h (the operation can be done with the gas supply closed and boiler locked).
- 6 Rotate the adjustment screw of the by-pass valve until the microswitch of the c/h flow switch clicks
- 7 Rotate the adjustment screw one turn counter-clockwise.

15.3 Removal

Warning: isolate the boiler from the mains electricity supply before removing any covering or component.

- 1 remove the front panel of the body and lower the instrument panel
- 2 close the c/h water flow and return valves and empty the primary circuit of the boiler
- 3 remove forks D and E and completely loosen the pipe fitting F (fig. 75);

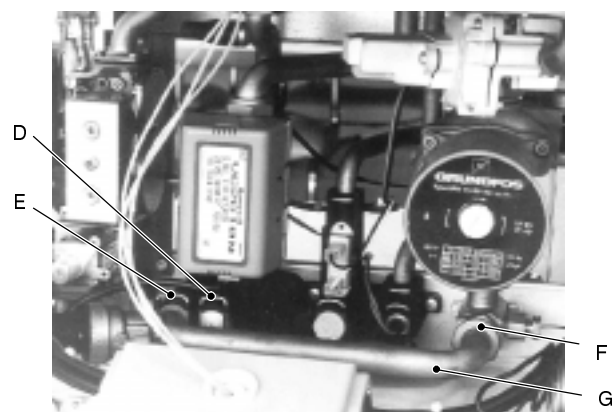


fig. 75

- 4 remove the pipe G and the by-pass valve
- 5 reassemble the valve carrying out the removal operations in reverse sequence.

Warning: to lubricate the O-ring gaskets exclusively use a silicone base grease compatible to be in contact with foods and approved by the local water Authorities.

16 Flue fan, venturi, air pressure switch

16.1 Function

Sealed chamber boilers have a fan whose function is that of forcing the expulsion of the products of combustion.

The fan is supplied by the flame ignition and control device at the beginning of the ignition cycle.

Its correct functioning is controlled by means of a system of a venturi device and air pressure switch.

Two different types of fans can be used (fig. 76a – fig. 76b).

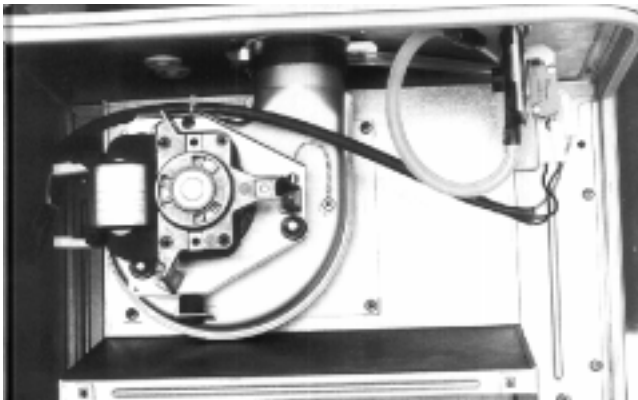


fig. 76a

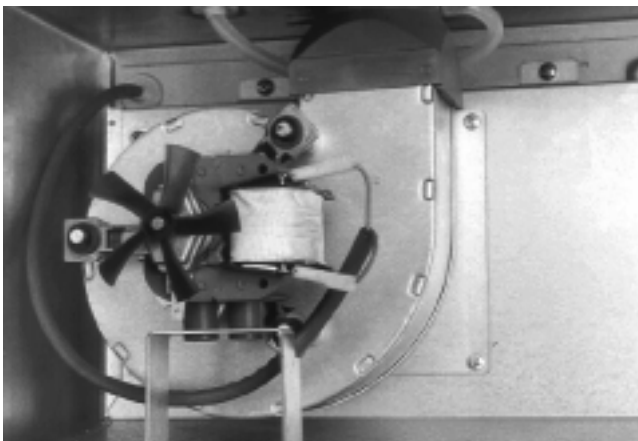


fig. 76b

16.2 Checks

- ✓ Check the venturi pressure

Warning: this test must be carried out with the lid of the sealed chamber cover correctly in place.

Remove the plug of the pressure test point A placed on the upper side of the boiler (fig. 77).

Connect a suitable pressure meter to the test point and run the boiler.

Measure the pressure (negative) and ensure that its absolute value is not less than the minimum indicated on the *Installation and Commissioning booklet (technical data section)*.

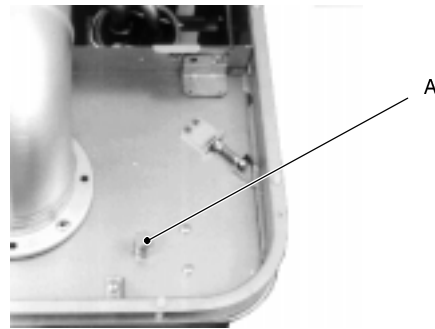


fig. 77

- ✓ Check of the fan

⚡ **Warning: isolate the boiler from the mains electricity supply before removing any covering or component.**

Remove the front panel of the body, the right side panel and the lid of the sealed chamber.

Disconnect the connectors B (fig. 78) and measure the electrical resistance of the motor.

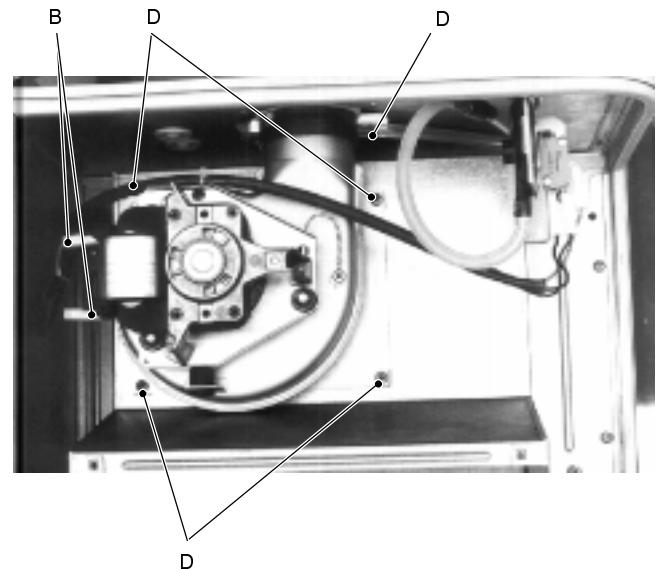


fig. 78

Electrical resistance of the motor:

fan of fig. 76a about 90 Ω

fan of fig. 76b about 40 Ω .

- ✓ Check of the air pressure switch operation

⚡ **Warning: isolate the boiler from the mains electricity supply before removing any covering or component.**

Remove the front panel of the body, the right side panel and the lid of the sealed chamber.

With the boiler switched off disconnect the connectors C (fig. 79) and measure the electrical resistance of the contacts.

Between COM and NO the contact must be open.

The electrical resistance between COM and NC must be zero.

Without connecting the connectors C, run the boiler and measure again the electrical resistance of the contacts.

The electrical resistance between COM and NO must be zero.

Between COM and NC the contact must be open.

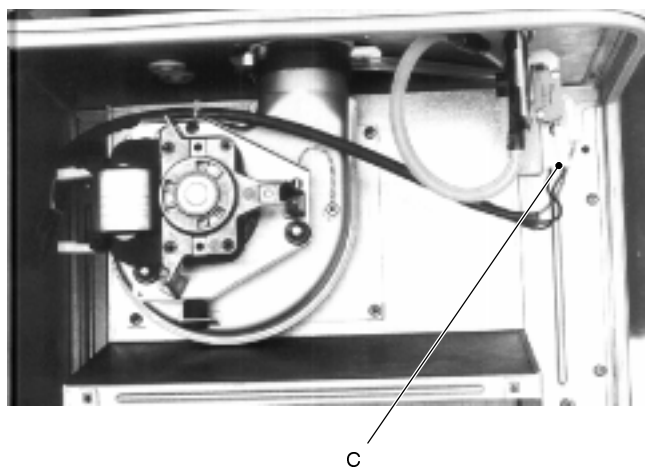


fig. 79

16.3 Removal of the fan and venturi device

Warning: isolate the boiler from the mains electricity supply before removing any covering or component.

- 1 Remove the front panel of the body, the right side panel and the lid of the sealed chamber
- 2 Disconnect the connectors *B* (fig. 78);
- 3 Disconnect pipe *D* which connects the venturi device to the pressure test point
- 4 completely loosen the four screws *E* and remove the fan extracting it downwards
- 5 remove the venturi device from the outlet mouth of the fan
- 6 assemble the fan carrying out the removal operations in reverse sequence.

Warning: fitting the venturi device on the outlet mouth of the fan be sure to direct the internal pipe as shown in fig. 80.

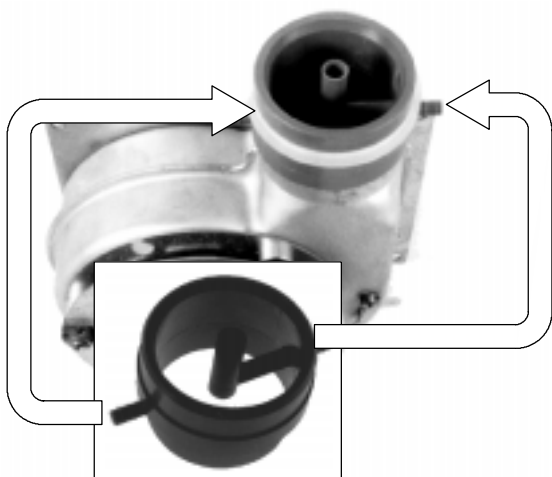


fig. 80

16.4 Removal of the air pressure switch

- 1 Remove the front panel of the body, the right side panel and the lid of the sealed chamber
- 2 Disconnect the connectors *F* (fig. 81);
- 3 Disconnect pipe *G* (fig. 81) which connects the air pressure switch to the air pressure test point.

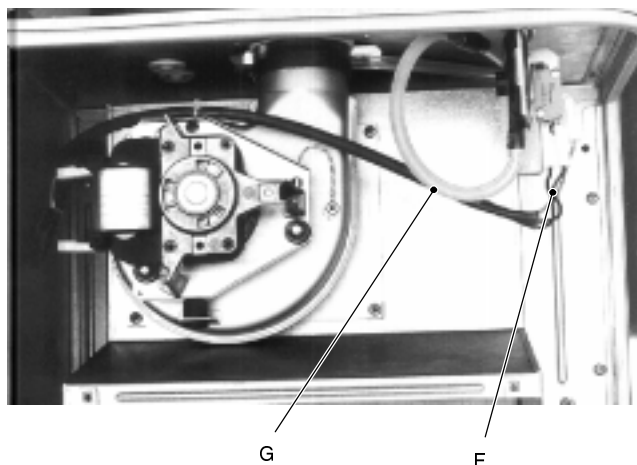


fig. 81

- 4 Unscrew the screws which hold the air pressure switch and remove it.
- 5 reassemble the air pressure switch carrying out the removal operations in reverse sequence.

Warning: connect the pipe *G* (fig. 81) to the pressure connection of the air pressure switch marked "L" (fig. 82).

Connect the electrical connectors to the air pressure switch as shown in fig. 82

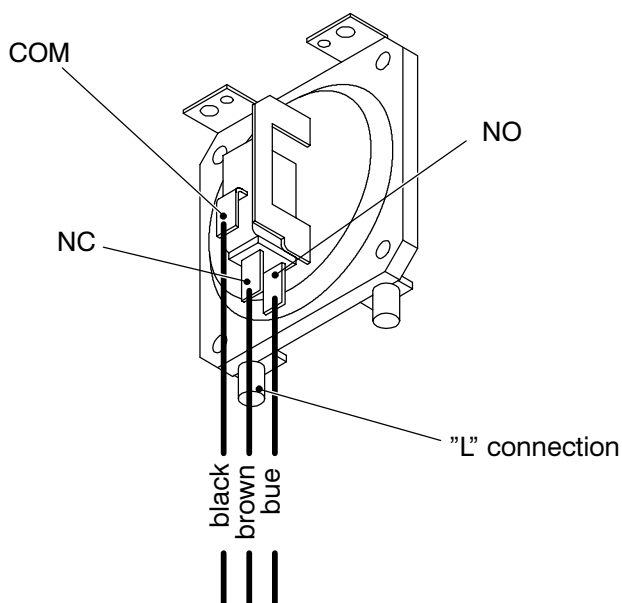


fig. 82

17 Ignition and detection electrodes

17.1 Function

Three electrodes are fitted on the burner. Two of them are the ignition electrodes and are fitted near the front part of the burner. The ignition sparks take place between their metallic edges over the central ramp of the burner during the ignition sequence.

The third electrode is the detection electrode and it detects the presence of the flame.

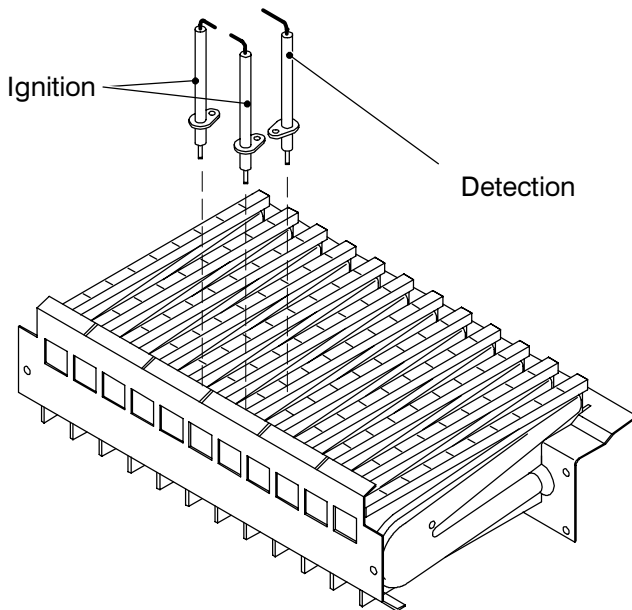


fig. 83

17.2 Checks

✓ Check the position of the electrode edges

⚡ **Warning: isolate the boiler from the mains electricity supply before removing any covering or component.**

Remove the front panel of the body, the sealed chamber cover and the combustion chamber panel.

Check for the correct distance between the metallic edges of the ignition electrodes and refer it to the fig. 84.

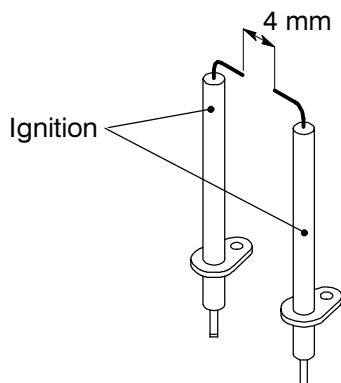


fig. 84

Check the integrity of the detection electrode and ensure that its metallic edge is correctly placed over the ramp of the burner.

✓ Check the connection wires

⚡ **Warning: isolate the boiler from the mains electricity supply before removing any covering or component.**

Remove the front panel of the body, the lid of the sealed chamber and the cover of the combustion chamber.

Check for the integrity of the insulation of wires which connect the electrodes to the ignition device.

17.3 Removal

- 1 Remove the front panel of the body, the sealed chamber cover and the combustion chamber panel.
- 2 Remove the grid placed under the burner.
- 3 Remove the burner unscrewing the four screws placed at the right and left sides of the burner.
- 4 Unscrew the two screws A (fig. 85) which hold the electrodes to the burner.

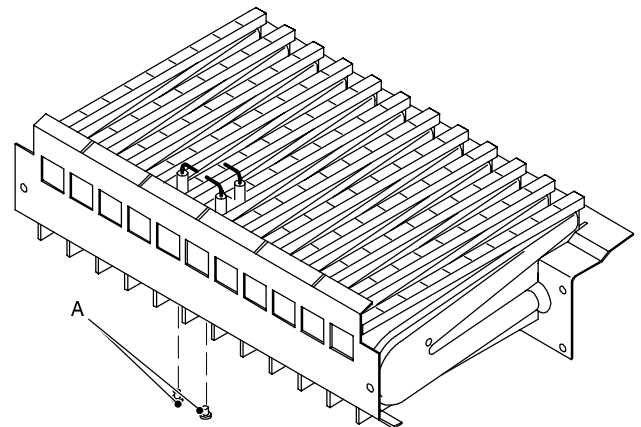


fig. 85

- 5 Extract the electrodes from the burner.
- 6 Remove the rear cover of the instrument panel and disconnect the electrode wires.
- 7 Assemble the electrodes carrying out the removal operation in reverse order.
In order to recognize the electrodes refer to fig. 86. Insert and fit the electrodes following the sequence indicated in the same figure.

Note: the metallic edge of the detection electrode (indicated in fig. 86) is longer than the one of the ignition electrodes.

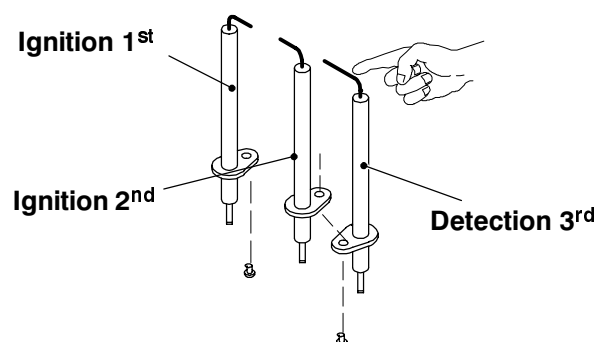


fig. 86

18 Safety thermostat

18.1 Function

The safety thermostat (*A* in fig. 87) is a device that senses the temperature of the main circuit water which flows in the outlet pipe of the main heat exchanger.

If the temperature control system of the boiler fails and the temperature of the main circuit reaches a dangerous temperature, the safety thermostat opens the electric circuit which supply the gas valve on – off operators.

Consequently, the full sequence ignition device attempts to light the burner and, at the end, locks the boiler (lock – out lamp on).

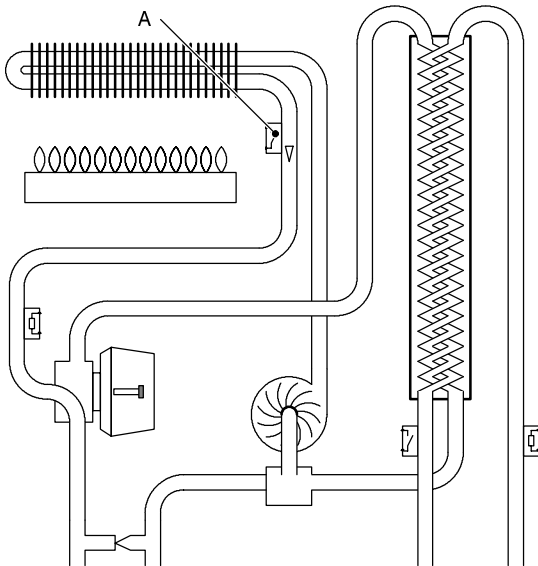


fig. 87

The safety thermostat does not re-set automatically. To reset, it is necessary to push the button *B* with the help of a tool on the instrument panel (fig. 88).

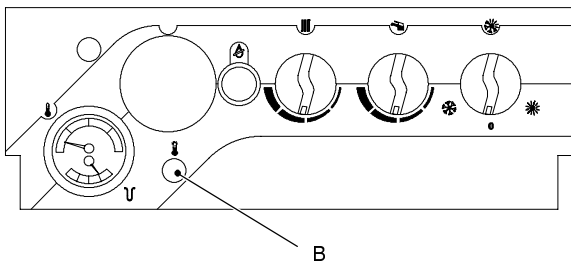


fig. 88

The safety thermostat has two parts:

- the temperature probe *C* which is fitted on the outlet pipe of the main heat exchanger (fig. 89)

and the electric switch which is fitted on the instrument panel (*B* in fig. 88);

- the switch *D* which is placed on the instrument panel (fig. 90).

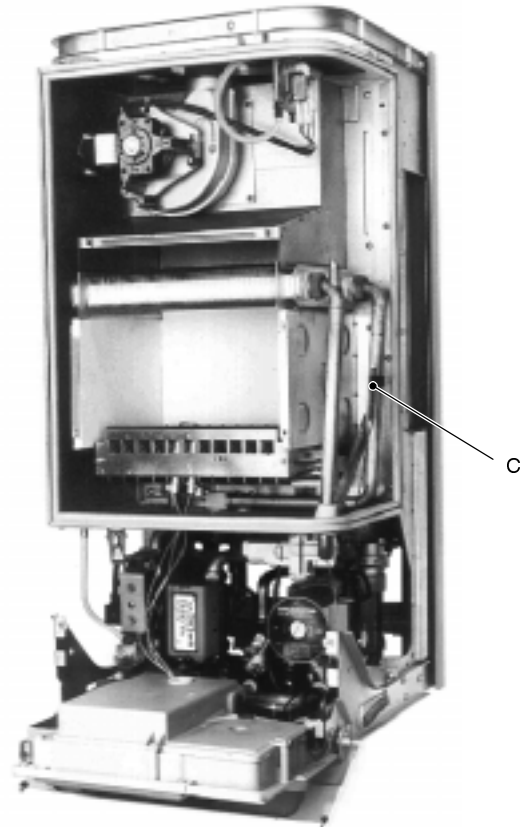


fig. 89

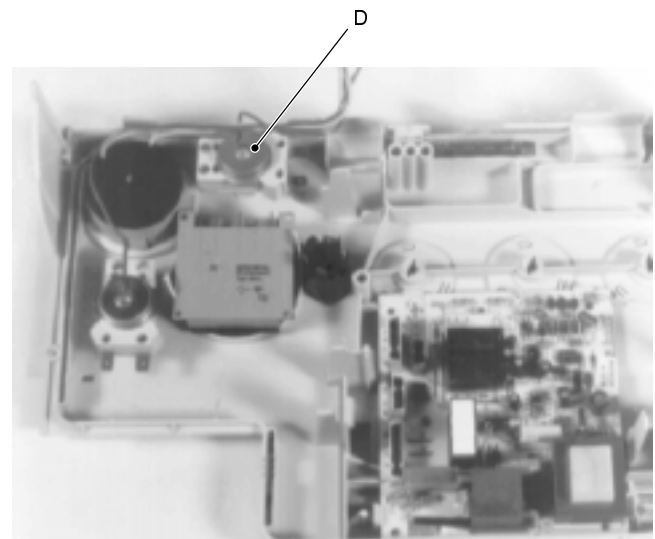


fig. 90

18.2 Checks

⚡ **Warning:** isolate the boiler from the mains electricity supply before removing any covering or component.

- ✓ Position of probe and integrity

Remove the front panel of the body, the right side panel and the sealed chamber cover

Verify the soundness of the fitting between the main circuit pipe and the temperature probe C (fig. 89)

Verify the integrity of the capillary which connects the probe to the switch. If the capillary is broken the switch opens automatically.

✓ Overheat temperature value

Set the temperature control knobs to their max. position and run the boiler in d.h.w. and c/h. Allow the boiler to reach its maximum operating temperature (monitor the temperature gauge on the instrument panel). The boiler should operate and maintain a temperature below that of the safety thermostat and no overheat intervention should occur.

It is not permissible to change the factory setting of the safety thermostat. The safety thermostat must be replaced if its operation temperature is too low and therefore constantly interrupts the correct functioning of the boiler and not allowing it to reach its maximum permissible operating temperatures.

✓ Electrical function

Remove the rear lid of the instrument panel (see chapter *access to and emptying hydraulic circuits*).

Disconnect the switch and check its electrical function. Normally (no intervention) the contact must be closed (electrical resistance zero Ω).

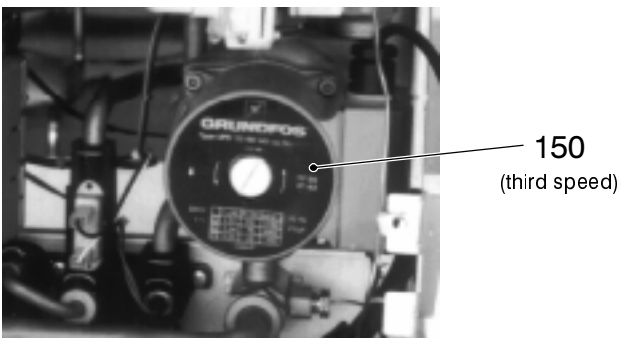
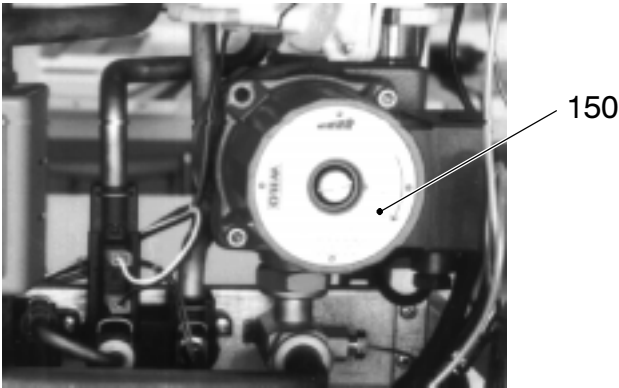
18.3 Removal

- 1 Remove the front panel of the body, the right side panel and the sealed chamber cover
- 2 Remove the spring which holds the temperature probe and extract the probe from the sealed chamber
- 3 Remove the rear lid of the instrument panel (see chapter *access to and emptying hydraulic circuits*).
- 4 Disconnect the switch
- 5 From the front side of the instrument panel unscrew the cylindrical nut which holds the switch and remove it.
- 6 Reassemble the switch carrying out the operations in reverse order.

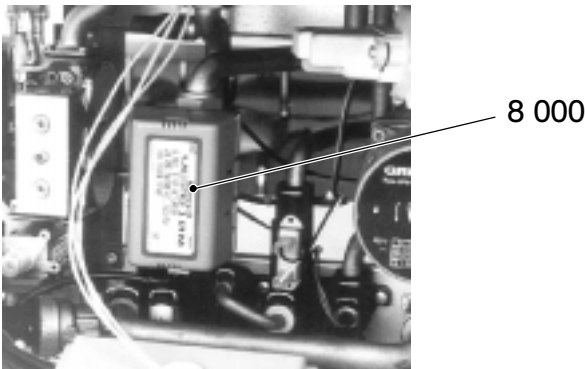
19 Electrical resistances

Summary of the electrical resistances in Ω of the components used in the appliances in the manual.

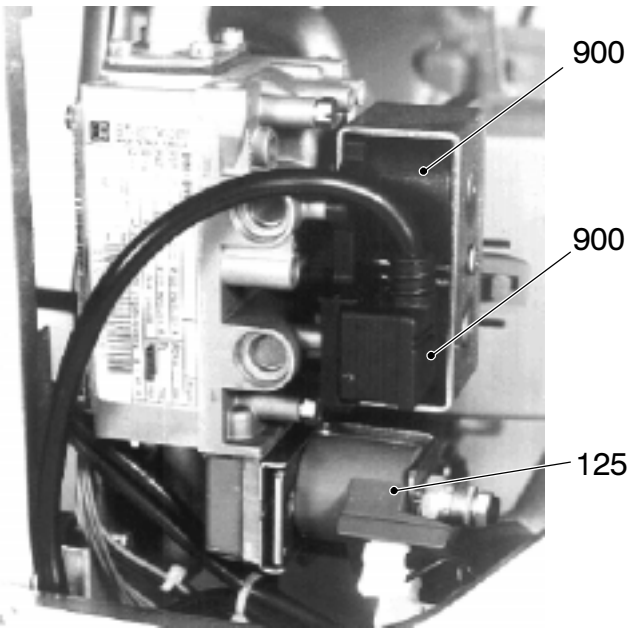
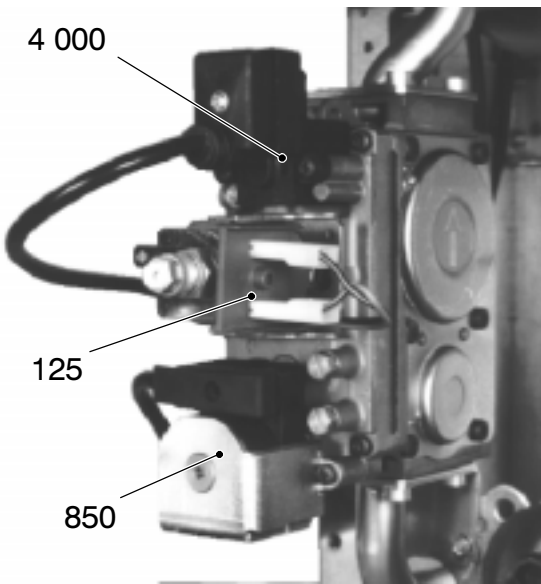
19.1 Circulator

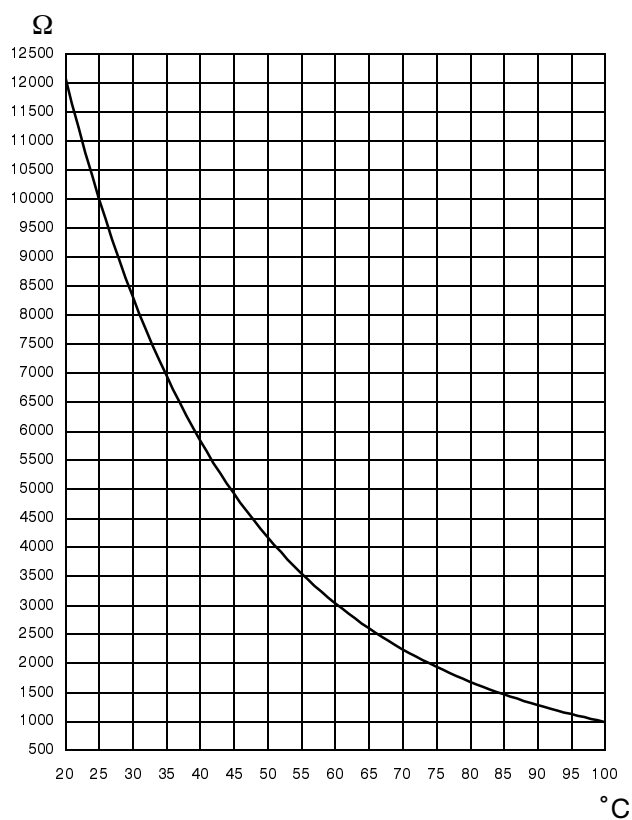
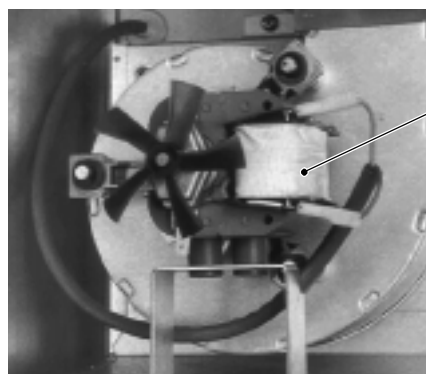
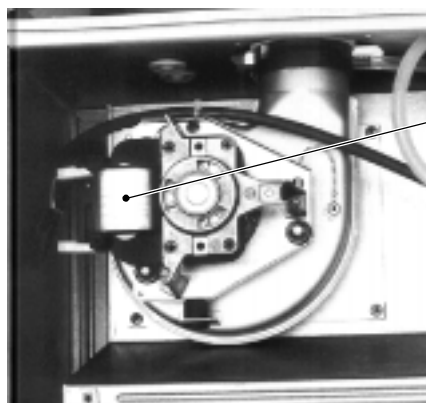


19.2 3-way valve



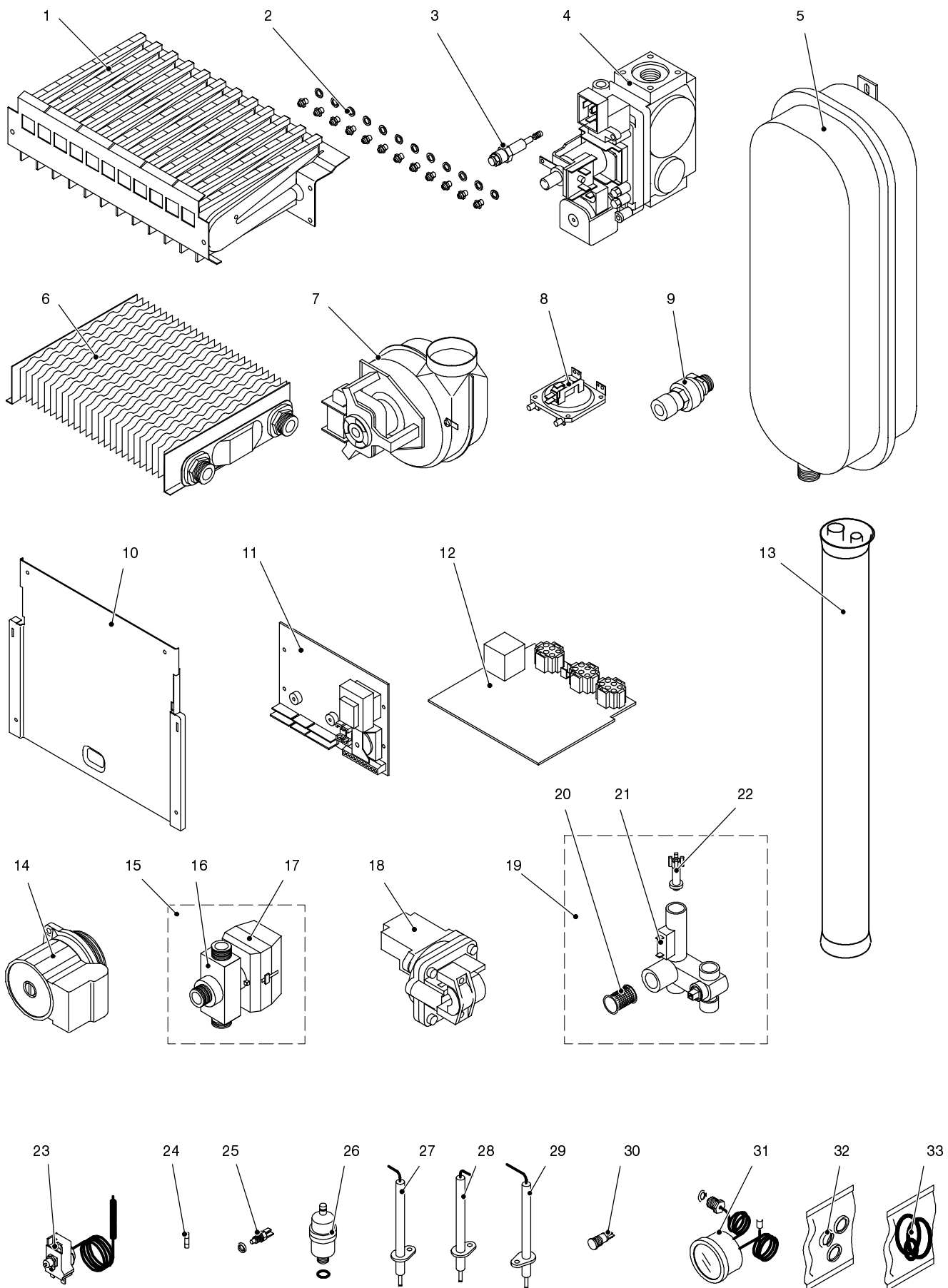
19.3 Gas valve



19.4 Temperature probes**19.5** Fan

20 Short spare parts list

Key	G.C. part no.	Description	Q.ty	Manufacturer part no.	Manufacturer's reference
1	173 148	12 ramps burner (120MFS 120RFS)	1	KG 1004 102	Polidoro
	173 149	14 ramps burner (124MFS)	1	KG 1004 147	
2	169 068	Injectors for natural gas (120MFS 120RFS) ref. 135	12	KG 1004 575	
	169 069	Injectors for natural gas (124MFS) ref. 130	14	KG 1044 502	
	169 070	Injectors for LPG (all models) ref. 77	14	KG 1004 576	
3	378 815	Gas modulator cartridge	1	KG 1074 106	Sit 3...37 mbar cod. 0.928.851
4	173 147	Gas valve	1	KG 1104 101	Sit 827 Nova
	379 976	Gas valve (alternative)	1	KG 1074 104	Sit 837 Tandem
5	173 146	Expansion vessel	1	KG 1043 103	Elbi – CIMM – Zilmet (8 l)
6	169 061	Main heat exchanger (120MFS 120RFS)	1	KG 1043 104	
	169 062	Main heat exchanger (124MFS)	1	KG 1073 136	
7	173 143	Fan (120MFS 120RFS)	1	KG 1087 120	EBM G2K097 – AD01
	173 142	Fan (124MFS)	1	KG 1117 120	SEL RL108/0034 A42
8	169 127	Air pressure switch	1	KG 1267 103	Yamatake – Honeywell C6065
9	169 075	Safety valve	1	KG 1043 151	Caleffi 511 ½" Orkli VS ½" 3K
10	169 116	Front combustion chamber panel (120MFS 120RFS)	1	KG 1157 173	
	169 117	Front combustion chamber panel (124MFS)	1	KG 1097 173	
11	169 081	Electronic regulation p.c.b.	1	KG 1166 101	
12	169 086	Full sequence control p.c.b.	1	KG 1086 103	
13	169 001	D.h.w. heat exchanger (120MFS 124MFS)	1	KG 1031 503	
14	173 141	Pump (complete)	1	KG 1093 103	Wilo RSL 20/70r
15	169 041	3 way valve (complete)	1	KG 1042 512	
16	173 145	3 way valve (idraulic unit)	1	KG 1042 511	Honeywell VCZZMG6 00E
17	173 144	3 way valve (motor)	1	KG 1042 122	Honeywell VC6012 ZZE
18	169 058	Main circuit flow switch	1	KG 1043 108	
19	169 005	D.h.w. flow switch (complete)	1	KG 1042 507	
20	169 011	D.h.w. flow switch (filter)	1	KG 1042 113	
21	169 010	D.h.w. flow switch (sensor)	1	KG 1042 107	
22	169 008	D.h.w. flow switch (float)	1	KG 1042 106	
23	379 086	Overheat thermostat	1	KG 1066 104	Firt STB/901
24	169 083	Fuse 1,6 A T	1	KG 1006 155	
25	169 016	Temperature probe (including O – ring) c/h or d.h.w	1	KG 1042 501	
26	173 140	Automatic air release valve (including O – ring)	1	KG 1093 501	Caleffi Robocal 5020 G3/8
27	169 148	Ignition electrode (right)	1	KG 1064 101	
28	169 150	Ignition electrode (left)	1	KG 1064 102	
29	169 149	detection electrode	1	KG 1064 103	
30	169 095	Shut down warning light and reset button	1	KG 1016 157	
31	169 096	Temperature – pressure gauge (including gasket)	1	KG 1006 530	
32	E00 002	Flat gasket pack (complete)	1	KG 1903 802	
33	E00 003	O – ring pack (complete)	1	KG 1903 801	





17962.0457.1 (9609)